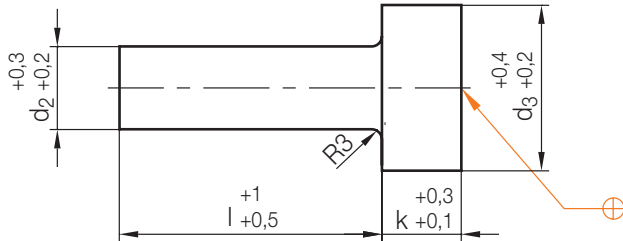


Nr./No.	d <sub>2</sub>	l										d <sub>1</sub>	Sr		d <sub>3</sub>	k
		22	27	36	46	56	66	76	86	96	116		15,5	40		
Z51/...	18											3,5			38	18
												4,5				
	24											4,5			48	23
Z511/...	12											2,5			28	13
												3,5				
	18											3			38	18
Z512/...	12											2,5; 3,5			28	13
	18											3; 4			38	18
Z518/...	18											4			45	23
	24											5,5			56	32
Z519/...	24											5,5			56	32
Z53/...	12											4			16	6
	18											6			22	
	24											8			28	

## Z50/...

Angießbuchsen-Rohling  
Sprue bushing, blank  
Buse d'injection

Mat.: 1.2826 / 740 N/mm<sup>2</sup>



d <sub>3</sub>	k	d <sub>2</sub>	l	Nr./No.
38	18	18	36	Z50/18x36
			56	56
			76	76

d <sub>3</sub>	k	d <sub>2</sub>	l	Nr./No.
48	23	24	56	Z50/24x 56
			76	76
			96	96
			136	136

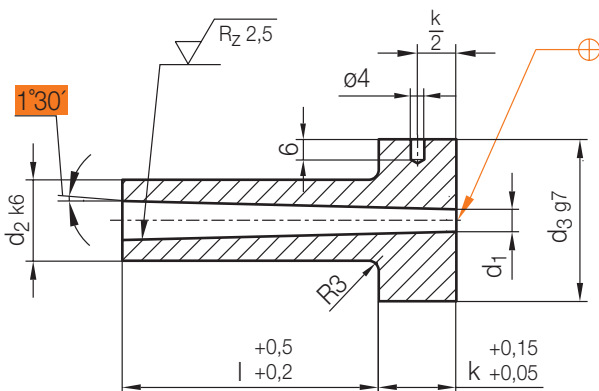
## Z51/...

Angießbuchse  
Sprue bushing  
Buse d'injection

Mat.: 1.2826/55 ± 2 HRC  
DIN ISO 10072 (DIN 16752)



► Info



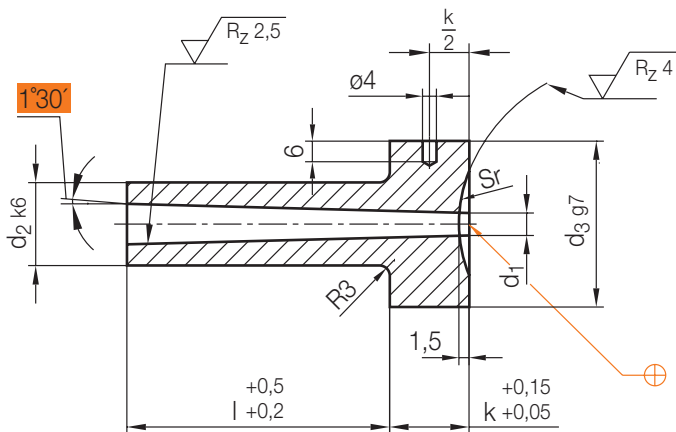
d <sub>3</sub>	k	d <sub>2</sub>	l	d <sub>1</sub>	Nr./No.	
38	18	18	27	3,5	Z51/18x27/3,5	
					36	36/3,5
					46	46/3,5
					56	56/3,5
					76	76/3,5
			27	4,5	96	96/3,5
					27	27/4,5
					36	36/4,5
					46	46/4,5

d <sub>3</sub>	k	d <sub>2</sub>	l	d <sub>1</sub>	Nr./No.				
38	18	18	56	4,5	Z51/18x56/4,5				
					76	76/4,5			
					96	96/4,5			
					48	23	24	46	Z51/24x46/4,5
									56
48	23	24	76	6,5	76/4,5				
					56	56/6,5			
					76	76/6,5			

Z51/...

Angießbuchse  
Sprue bushing  
Buse d'injection

Mat.: 1.2826/55 ± 2 HRC  
DIN ISO 10072 (DIN 16752)



5

d <sub>3</sub>	k	d <sub>2</sub>	l	d <sub>1</sub>	Sr	Nr./No.	Sr	Nr./No.				
38	18	18	27	3,5	15,5	Z51/18x27/3,5/15,5	40	Z51/18x27/3,5/40				
			36			36						
			46			46						
			56			56						
			76			76						
			96			96						
			27	4,5		Z51/18x27/4,5/15,5		Z51/18x27/4,5/40				
			36			36						
			46			46						
			56			56						
			76			76						
			96			96						
			48			23		24	46	4,5	Z51/24x46/4,5/15,5	Z51/24x46/4,5/40
									56		56	
76	76											
56	6,5	Z51/24x56/6,5/15,5		Z51/24x56/6,5/40								
76		76										
56		56										
76		76										

09.08.12.22 0022229

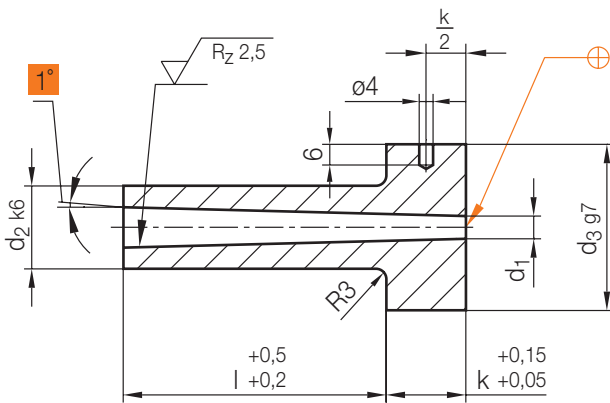
# Z511/...

Angießbuchse  
Sprue bushing  
Buse d'injection

Mat.: 1.2826/55 ± 2 HRC  
DIN ISO 10072 (DIN 16752)



► Info



d <sub>3</sub>	k	d <sub>2</sub>	l	d <sub>1</sub>	Nr./No.
28	13	12	22	2,5	Z511/12x22/2,5
			27		27
			36		36
			46		46
			22		3,5
		27	27		
		36	36		
		46	46		
		56	56		
		38	18	18	27
36	36				
46	46				

d <sub>3</sub>	k	d <sub>2</sub>	l	d <sub>1</sub>	Nr./No.	
38	18	18	56	3	Z511/18x 56/3	
			66		66	
			76		76	
			86		86	
			96		96	
				4	116	116
			27		Z511/18x 27/4	
			36		36	
			46		46	
			56		56	
		66	66			
		76	76			
		86	86			
		96	96			
		116	116			

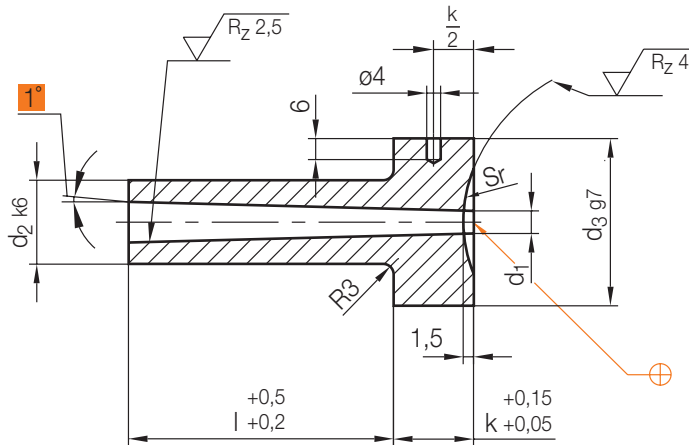
# Z511/...

Angießbuchse  
Sprue bushing  
Buse d'injection

Mat.: 1.2826/55 ± 2 HRC  
DIN ISO 10072 (DIN 16752)



► Info



5

d <sub>3</sub>	k	d <sub>2</sub>	l	d <sub>1</sub>	Sr	Nr./No.	Sr	Nr./No.			
28	13	12	22	2,5	15,5	Z511/12x 22/2,5/15,5	40	Z511/12x 22/2,5/40			
			27			27					
			36			36					
			46			46					
			22			3,5		Z511/12x 22/3,5/15,5	Z511/12x 22/3,5/40		
			27					27			
			36	36							
			46	46							
			56	56							
			38	18		18		27	3	Z511/18x 27/3 /15,5	Z511/18x 27/3 /40
								36		36	
								46		46	
								56		56	
								66		66	
76	76										
86	86										
96	96										
116	116										
27	4	Z511/18x 27/4 /15,5			Z511/18x 27/4 /40						
36		36									
46		46									
56		56									
66		66									
76		76									
86		86									
96	96										
116	116										

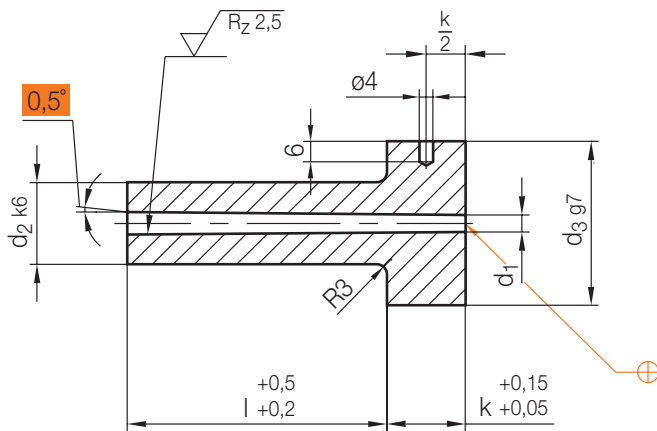
# Z512/...

Angießbuchse  
Sprue bushing  
Buse d'injection

Mat.: 1.2826/55 ± 2 HRC  
DIN ISO 10072 (DIN 16752)



► Info



$d_3$	k	$d_2$	l	$d_1$	Nr./No.
28	13	12	27	2,5	Z512/12x27/2,5
			36		36
			46		46
			56		56
			36		3,5
		46	46		
		56	56		
		66	66		
		76	76		

$d_3$	k	$d_2$	l	$d_1$	Nr./No.	
38	18	18	46	3	Z512/18x 46/3	
			56		56	
			66		66	
			76		76	
			86		86	
			96		96	
			56		4	Z512/18x 56/4
			66			66
			76			76
			86			86
96	96					
			116	116		

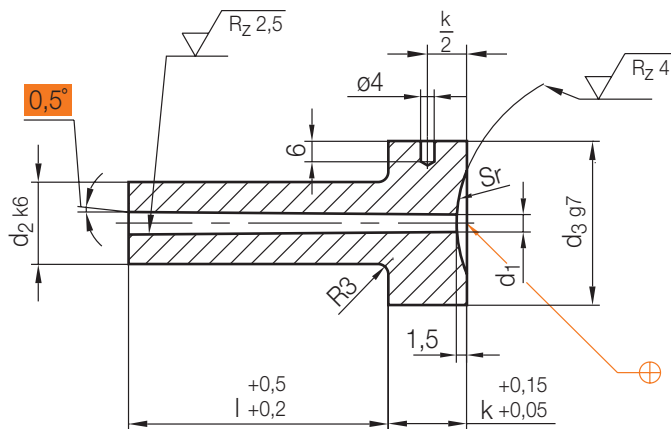
Z512/...

Angießbuchse  
Sprue bushing  
Buse d'injection

Mat.: 1.2826/55 ± 2 HRC  
DIN ISO 10072 (DIN 16752)



► Info



5

d <sub>3</sub>	k	d <sub>2</sub>	l	d <sub>1</sub>	Sr	Nr./No.			
28	13	12	27	2,5	15,5	Z512/12x27/2,5/15,5			
						36			
						46			
						56			
			36	3,5	Z512/12x36/3,5/15,5				
					46				
					56				
					66				
					76				
					76				
		36	13	12	27	2,5	40	Z512/12x27/2,5/40	
								36	
								46	
								56	
								76	
				36	3,5	Z512/12x36/3,5/40			
						46			
						56			
						66			
						76			

d <sub>3</sub>	k	d <sub>2</sub>	l	d <sub>1</sub>	Sr	Nr./No.			
38	18	18	46	3	15,5	Z512/18x 46/3/15,5			
						56			
						66			
						76			
			36	3,5	Z512/18x 56/4/15,5				
					86				
					96				
					56	4	40	Z512/18x 56/4/40	
					66				
					76				
		86							
		36	18	18	46	3	40	Z512/18x 46/3/40	
								56	
								66	
								76	
								86	
				36	3,5	Z512/18x 56/4/40			
						96			
						56	4	40	Z512/18x 56/4/40
						66			
76									
86									
36	18	18	46	3	40	Z512/18x 46/3/40			
						56			
						66			
						76			
						86			
						96			

09 08 1 2 22 002229

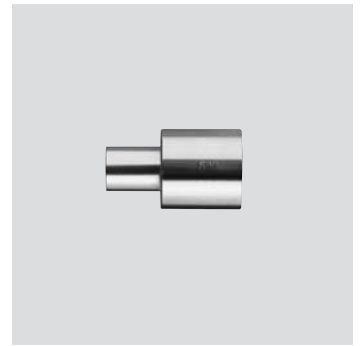
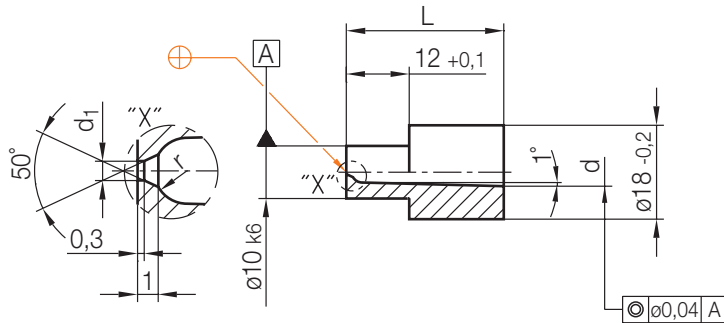




## Z516/...

Düsenmundstück  
Nozzle insert  
Douille d'injection

Mat.: 1.2343/52 + 2 HRC



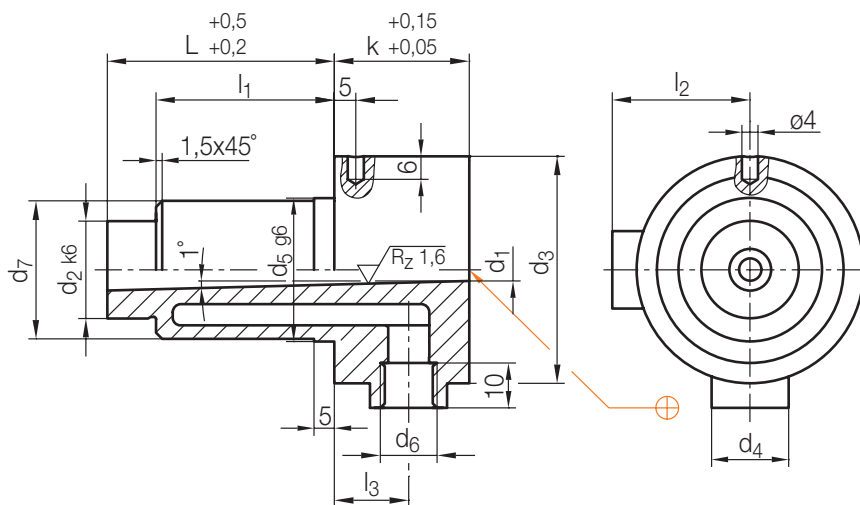
► Info

r	d	L	d <sub>1</sub>	Nr./No.
1,5	4	30	0,8	Z516/4 x30/0,8
2	5,4			5,4x30/0,8

## Z518/...

Angießbuchse, temperierbar  
Thermoset-sprue bushing  
Douille d'injection à température réglable chauffable

Mat.: 1.2363/54 + 2 HRC



► Info

k	d <sub>3</sub>	l <sub>3</sub>	l <sub>2</sub>	l <sub>1</sub>	d <sub>7</sub>	d <sub>5</sub>	d <sub>4</sub>	d <sub>6</sub>	d <sub>2</sub>	L	d <sub>1</sub>	Nr./No.
23	45	13,5	28,5	36	25	26	15	M10x1	18	46	4	Z518/18x 46/4
				46								56
				66								76
				86								96
32	56	18	34	44	34	35	19	M14x1,5	24	56	5,5	Z518/24x 56/5,5
				64								76
				84								96
				104								116



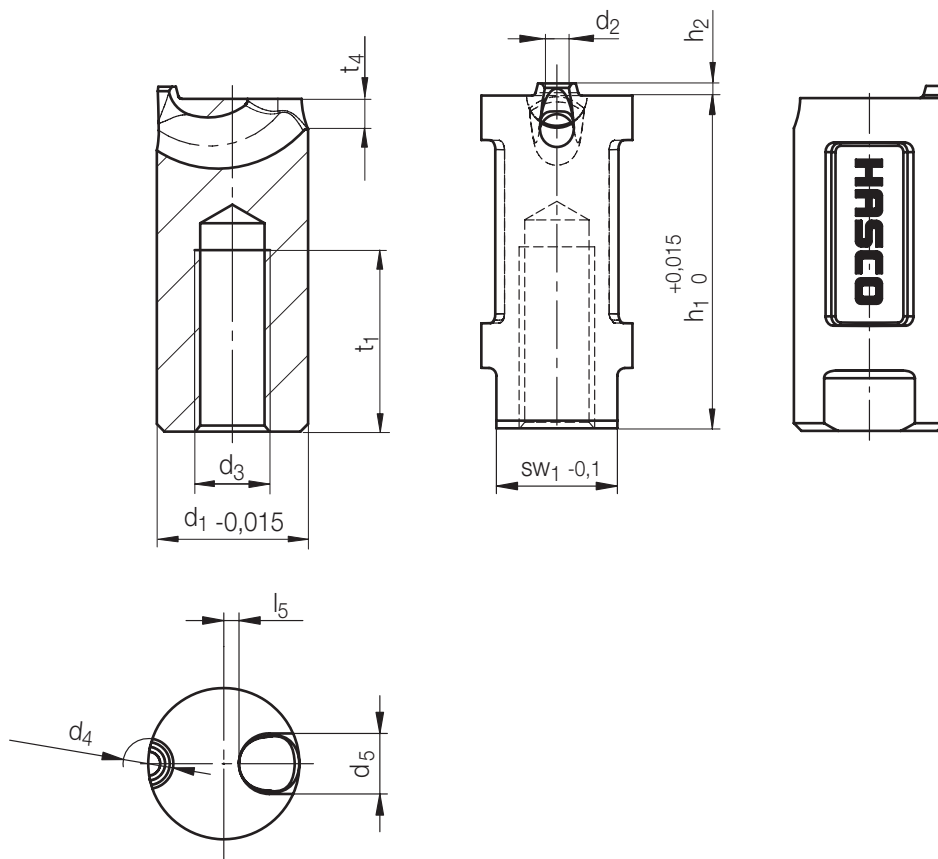
Z 1050 / ...

Angießeinsatz, rund  
mit gebogenem Tunnel

Gate insert, round  
with rounded tunnel

Insert d'injection  
avec tunnel courbe

Mat.: 1.3343/54 + 2 HRC



5

Neu / New / Nouveau

SW <sub>1</sub>	t <sub>1</sub>	t <sub>4</sub>	l <sub>5</sub>	h <sub>2</sub>	d <sub>3</sub>	d <sub>4</sub>	d <sub>5</sub>	d <sub>1</sub>	h <sub>1</sub>	d <sub>2</sub>	Nr./No.	
5,5	10	1,25	0,5	0,6	M4	2,2	2,5	6	17	0,6	Z 1050/ 6x17x0,6	
6	13	1,5	0,75			2,2	3	8	22	0,6	Z 1050/ 8x22x0,6	
						2,4				0,8	0,8	
8	12	2	1	0,8	M5	2,5	4	10	22	0,8	Z 1050/10x22x0,8	
						2,9					1,2	1,2
						3,3					1,6	1,6
10	11	2,5				2,9	5	12	22	1,2	Z 1050/12x22x1,2	
						3,3				1,6	1,6	
						3,7				2,0	2,0	

09 08 1 2 22 002229

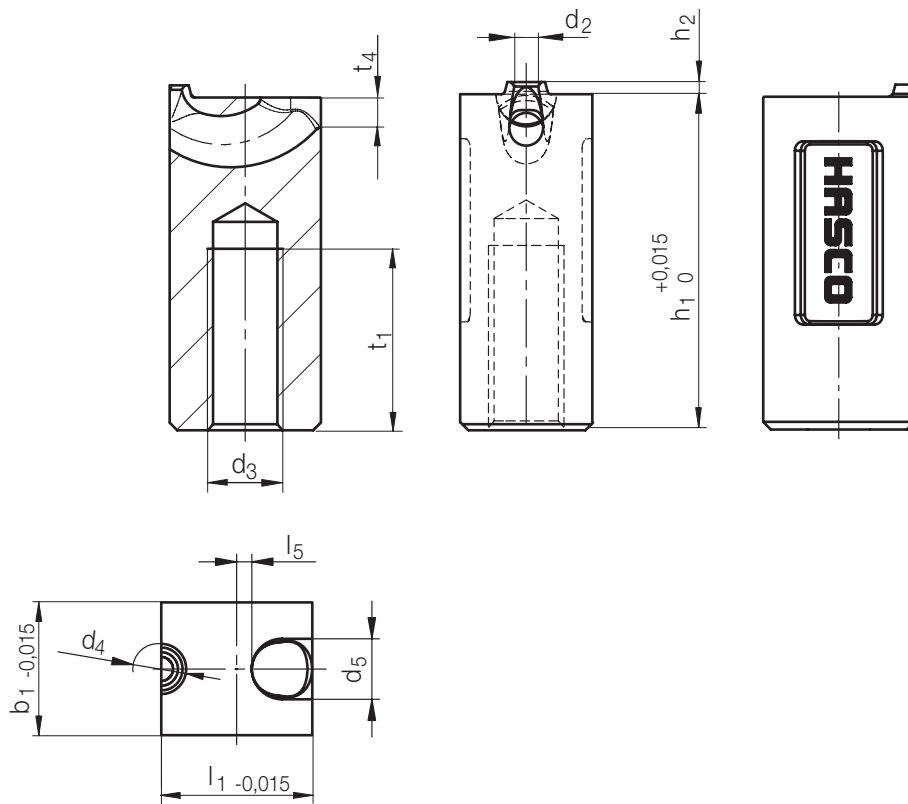
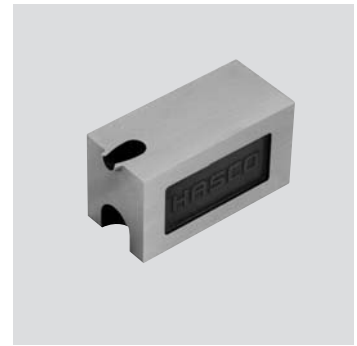
Z 1060/...

Angießeinsatz, eckig  
mit gebogenem Tunnel

Gate insert, square  
with rounded tunnel

Insert d'injection, anguleux  
avec tunnel courbe

Mat.: 1.3343/54 +2HRC



Neu / New / Nouveau

t <sub>1</sub>	t <sub>4</sub>	l <sub>5</sub>	h <sub>2</sub>	d <sub>3</sub>	d <sub>4</sub>	d <sub>5</sub>	l <sub>1</sub>	b <sub>1</sub>	h <sub>1</sub>	d <sub>2</sub>	Nr./No.
13	1,5	0,75	0,6	M4	2,2	3	8	6	22	0,6	Z 1060/ 8x 6x22x0,6
					2,4					0,8	
12	2	1	0,8	M5	2,5	4	10	8		1,2	Z 1060/10x 8x22x0,8
					3,3					1,6	
					3					1,2	
11	2,5				2,9	5	12	10		1,2	Z 1060/12x10x22x1,2
					3,3					1,6	
					3,7					2,0	

09.08.12.22 002229

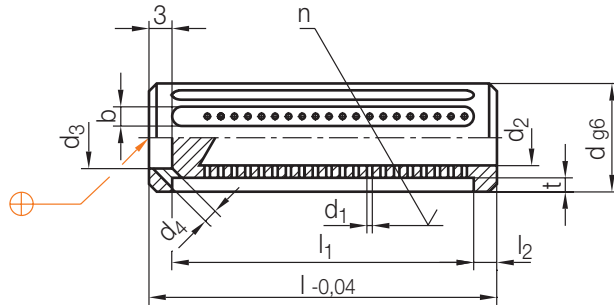
### Z 109/...

Filtereinsatz  
Filter cartridge  
Cartouche filtrante

Mat.: 1.2344/49 ± 1 HRC



► Info



n	mm <sup>2</sup>	t	b	l <sub>2</sub>	l <sub>1</sub>	d <sub>4</sub>	d <sub>3</sub>	d <sub>2</sub>	d	l	d <sub>1</sub>	Nr./No.
276	106	1,8	2	3	39	1,8	8	7,2	<b>14</b>	<b>45</b>	<b>0,7</b>	Z109/14x45/0,7
228	180	2,5	2,5			2,5	12,5	12	<b>20</b>		<b>1</b>	20x45/1
264	298			3,5	42,5		17	17	<b>25</b>	<b>50</b>	<b>1,2</b>	25x50/1,2

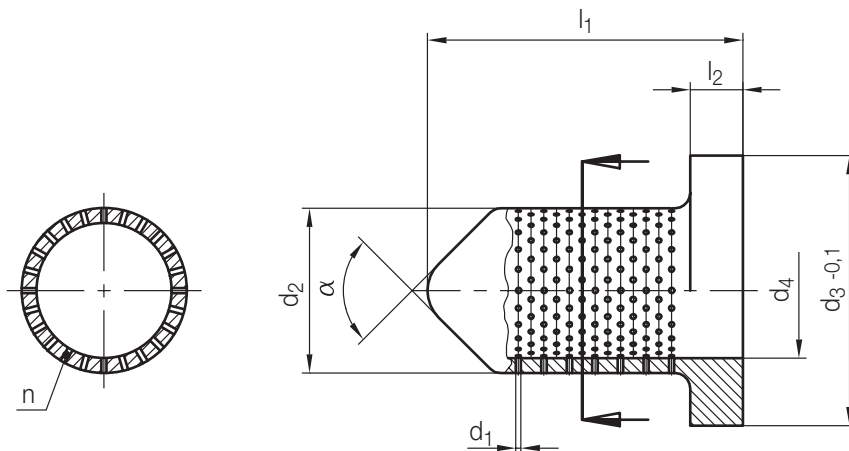
### Z 1095/...

Filtereinsatz  
Filter cartridge  
Cartouche filtrante

Mat.: 1.2344/42 HRC



► Info



n	mm <sup>2</sup>	l <sub>2</sub>	α	d <sub>4</sub>	d <sub>3</sub>	d <sub>2</sub>	l <sub>1</sub>	d <sub>1</sub>	Nr./No.
312	120	7	60	8	18	<b>12</b>	<b>41</b>	<b>0,7</b>	Z1095/12x41/0,7
			90	18	36	<b>22</b>	<b>42</b>	<b>1,3</b>	22x42/1,3
192	603	12	130	30	52	<b>36</b>	<b>54</b>	<b>2</b>	36x54/2

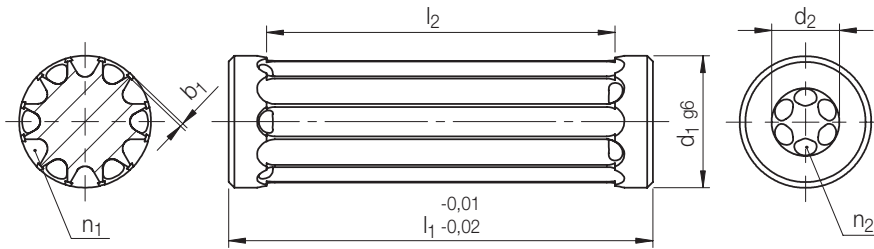
09.08.12.22 0022229

5

H 5050/...

Spaltfilter  
Filter cartridge  
Filtre à gorges

Mat.: 1.2343/46 + 2 HRC



$n_2$	$n_1$	$d_2$	$l_2$	$d_1$	$l_1$	$b_1$	Nr./No.
6	12	7,2	37	<b>14</b>	<b>45</b>	<b>0,35</b>	H5050/ 14x45x0,35
		12	35	<b>20</b>		<b>0,45</b>	20x45x0,45
7	14	17	38	<b>25</b>	<b>50</b>	<b>0,5</b>	25x50x0,5