



**COUPLINGS, MULTICOUPLINGS & MOULD COOLING PRODUCTS**

SERIE 100.12

KUPPLUNGEN, MULTIKUPPLUNGEN & KÜHLUNGSELEMENTE FÜR WERKZEUGE



**Interchangeability - Kompatibilität**  
STAUBLI RPL

**Temperature Range - Temperaturbereich**  
-20°C +100°C ( -40°F +250°F )

**Working Pressure - Betriebsdruck**  
0 - 10 bar (0 - 160 PSI)

**Flow capacity - Nennweite**  
NW 13

**Material - Material**

Coupler Body - Kupplungsgrundkörper : Brass Nickel Plated - Messing Vernickelt  
Sleeve - Hülse : Brass Nickel Plated - Messing Vernickelt  
Springs - Federn : Stainless Steel - Edelstahl  
Locking O-Ring - Sprengring : Stainless Steel - Edelstahl  
Balls - Kugeln : Stainless Steel - Edelstahl  
Seals - Dichtungen : NBR Nitrile (Ni)

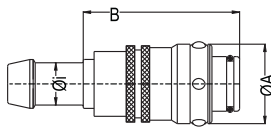
**Standard version - Standardversion**  
Brass - Messing  
NBR Nitrile (Ni)  
Nickel plated - Vernickelt  
Locking balls 9 units - 9 Stück Kugeln

**Options - Optionen**

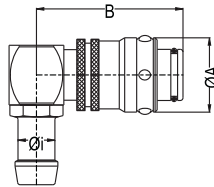
B - Blue - Blau  
R - Red - Rot  
V - FPM Seal - FPM Dichtung  
E - EPDM Seal - EPDM Dichtung

For optional orders please add the symbol of your option end of the order no.  
Bei Bestellungen Kennbuchstabe bitte hinzufügen (Beispiel: 100.08.HG08V)

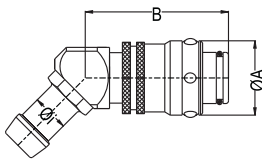
Plug / Stecker



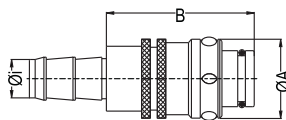
Standard hose tail plug  
Stecker mit Schlauchtülle



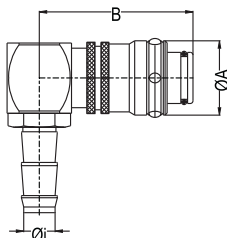
Standard hose tail plug 90°  
Stecker mit 90° Schlauchtülle



Standard hose tail plug 135°  
Stecker mit 135° Schlauchtülle



Push-lock hose tail plug  
Stecker mit Schnellsteck - Schlauchtülle



Push-lock hose tail plug 90°  
Stecker mit 90° Schnellsteck - Schlauchtülle

| ØF / Øi<br>Connection - Anschlüsse |      | Order No / Bestellnr. | Dimension in / Abmessungen in (mm) |    |
|------------------------------------|------|-----------------------|------------------------------------|----|
|                                    |      |                       | A                                  | B  |
| Ø 13 mm                            | 1/2" | 100.12 HGF 13         | 28                                 | 44 |
| Ø 16 mm                            | 5/8" | 100.12 HGF 16         | 28                                 | 44 |

|         |      |                   |    |    |
|---------|------|-------------------|----|----|
| Ø 13 mm | 1/2" | 100.12 HGF 13-90° | 28 | 54 |
| Ø 16 mm | 5/8" | 100.12 HGF 16-90° | 28 | 54 |

|         |      |                    |    |    |
|---------|------|--------------------|----|----|
| Ø 13 mm | 1/2" | 100.12 HGF 13-135° | 28 | 54 |
| Ø 16 mm | 5/8" | 100.12 HGF 16-135° | 28 | 54 |

|         |      |               |    |    |
|---------|------|---------------|----|----|
| Ø 13 mm | 1/2" | 100.12 FGF 13 | 28 | 44 |
| Ø 16 mm | 5/8" | 100.12 FGF 16 | 28 | 44 |

|         |      |                   |    |    |
|---------|------|-------------------|----|----|
| Ø 13 mm | 1/2" | 100.12 FGF 13-90° | 28 | 54 |
| Ø 16 mm | 5/8" | 100.12 FGF 16-90° | 28 | 54 |

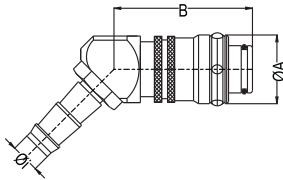
**COUPLINGS, MULTICOUPLINGS & MOULD COOLING PRODUCTS**

KUPPLUNGEN, MULTIKUPPLUNGEN & KÜHLUNGSELEMENTE FÜR WERKZEUGE

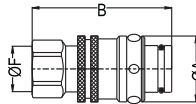
**SERIE 100.12**



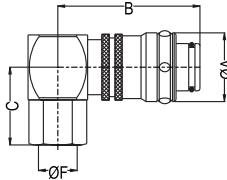
**Plug / Stecker**



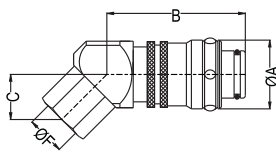
Push-lock hose tail plug 135°  
Stecker mit 135° Schnellsteck - Schlauchtülle



Female threaded plug  
Stecker mit Innengewinde



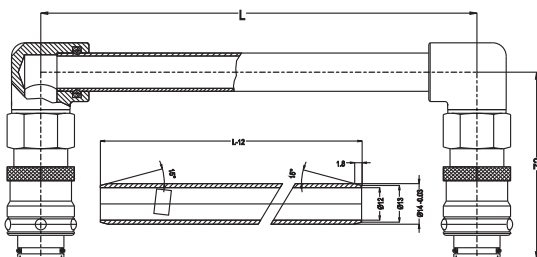
Female threaded plug 90°  
Stecker mit 90° Innengewinde



Female threaded plug 135°  
Stecker mit 135° Innengewinde

| ØF / Øi<br>Connection - Anschlüsse | Order No / Bestellnr. | Dimension in / Abmessungen in (mm) |    |        |
|------------------------------------|-----------------------|------------------------------------|----|--------|
|                                    |                       | A                                  | B  | C / SW |
| Ø 13 mm 1/2"                       | 100.12 FGF 13-135°    | 28                                 | 54 |        |
| Ø 16 mm 5/8"                       | 100.12 FGF 16-135°    | 28                                 | 54 |        |
| BSP 1/2"                           | 100.12 DGF 21         | 28                                 | 60 | 24     |
| NPT 1/2"                           | 100.12 NGF 21         | 28                                 | 62 | 24     |
| BSP 3/4"                           | 100.12 DGF 26         | 28                                 | 70 | 35     |
| NPT 3/4"                           | 100.12 NGF 26         | 28                                 | 70 | 35     |
| BSP 3/8"                           | 100.12 DGF 17-90°     | 28                                 | 54 | 29     |
| NPT 3/8"                           | 100.12 NGF 17-90°     | 28                                 | 54 | 29     |
| BSP 1/2"                           | 100.12 DGF 21-90°     | 28                                 | 54 | 35     |
| NPT 1/2"                           | 100.12 NGF 21-90°     | 28                                 | 54 | 35     |
| BSP 3/8"                           | 100.12 DGF 17-135°    | 28                                 | 54 | 10     |
| NPT 3/8"                           | 100.12 NGF 17-135°    | 28                                 | 54 | 10     |
| BSP 1/2"                           | 100.12 DGF 21-135°    | 28                                 | 54 | 16     |
| NPT 1/2"                           | 100.12 NGF 21-135°    | 28                                 | 54 | 16     |

**Diverting connector / Umlenkstecker ( For / Für TST 100.12 )**



| Order No / Bestellnr. | L   | L-24 |
|-----------------------|-----|------|
| 100.12 - KG 125       | 125 | 90   |
| 100.12 - KG 250       | 250 | 250  |
| 100.12 - KG 500       | 500 | 470  |



## SERIE 100.12

**COUPLINGS, MULTICOUPLINGS & MOULD COOLING PRODUCTS**

**KUPPLUNGEN, MULTIKUPPLUNGEN & KÜHLUNGSELEMENTE FÜR WERKZEUGE**



9 Balls  
With Valve / mit Ventil

**Standard version - Standardversion**

Brass - Messing  
NBR Nitrile (Ni)  
Nickel plated - Vernickelt  
Locking balls 9 units - 9 Stück Kugeln

**Options - Optionen**

B - Blue - Blau  
R - Red - Rot  
V - FPM Seal - FPM Dichtung  
E - EPDM Seal - EPDM Dichtung

For optional orders please add the symbol of your option end of the order no.  
Bei Bestellungen Kennbuchstabe bitte hinzufügen  
(Beispiel: 100.12.HGBIOV)

**Interchangeability - Kompatibilität**  
STAUBLI RPL

**Temperature Range - Temperaturbereich**  
-20°C +100°C ( -40°F +250°F )

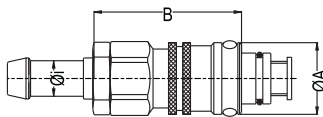
**Working Pressure - Betriebsdruck**  
0 - 10 bar (0 - 160 PSI)

**Flow capacity - Nennweite**  
NW 13

**Material - Material**

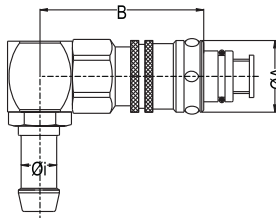
Coupler Body - Kupplungsgrundkörper : Brass Nickel Plated - Messing Vernickelt  
Sleeve - Hülse : Brass Nickel Plated - Messing Vernickelt  
Springs - Federn : Stainless Steel - Edelstahl  
Locking O-Ring - Sprenging : Stainless Steel - Edelstahl  
Balls - Kugeln : Stainless Steel - Edelstahl  
Seals - Dichtungen : NBR Nitrile (Ni)

**Plug / Stecker**



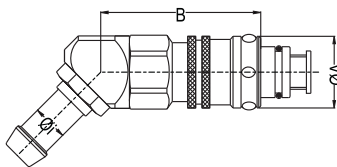
Standard hose tail plug with valve  
Stecker mit Schlauchtülle und Ventil

| ØF / Øi<br>Connection - Anschlüsse |      | Order No / Bestellnr. | Dimension in / Abmessungen in (mm) |    |
|------------------------------------|------|-----------------------|------------------------------------|----|
|                                    |      |                       | A                                  | B  |
| Ø 13 mm                            | 1/2" | 100.12 HGB 13         | 28                                 | 65 |
| Ø 16 mm                            | 5/8" | 100.12 HGB 16         | 28                                 | 65 |



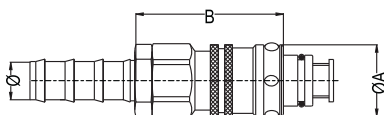
Standard hose tail plug with valve 90°  
Stecker mit 90° Schlauchtülle und Ventil

|         |      |                   |    |    |
|---------|------|-------------------|----|----|
| Ø 13 mm | 1/2" | 100.12 HGB 13-90° | 28 | 70 |
| Ø 16 mm | 5/8" | 100.12 HGB 16-90° | 28 | 70 |



Standard hose tail plug with valve 135°  
Stecker mit 135° Schlauchtülle und Ventil

|         |      |                    |    |    |
|---------|------|--------------------|----|----|
| Ø 13 mm | 1/2" | 100.12 HGB 13-135° | 28 | 70 |
| Ø 16 mm | 5/8" | 100.12 HGB 16-135° | 28 | 70 |



Push-lock hose tail plug with valve Stecker mit  
Schnellsteck - Schlauchtülle und Ventil

|         |      |               |    |    |
|---------|------|---------------|----|----|
| Ø 13 mm | 1/2" | 100.12 FGB 13 | 28 | 65 |
| Ø 16 mm | 5/8" | 100.12 FGB 16 | 28 | 65 |

**COUPLINGS, MULTICOUPLINGS & MOULD COOLING PRODUCTS**

KUPPLUNGEN, MULTIKUPPLUNGEN & KÜHLUNGSELEMENTE FÜR WERKZEUGE

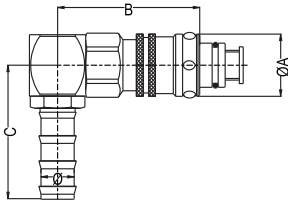
**SERIE 100.12**



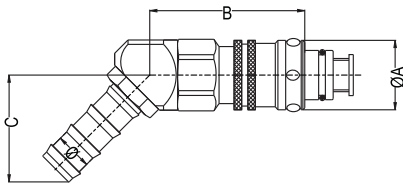
9 Balls  
With Valve / mit Ventil



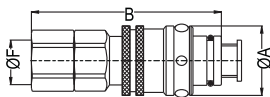
**Plug / Stecker**



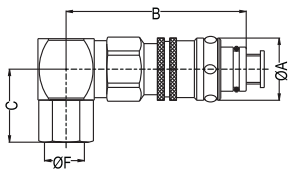
Push-lock hose tail plug with valve 90°  
Stecker mit 90°  
Schnellsteck - Schlauchtülle und Ventil



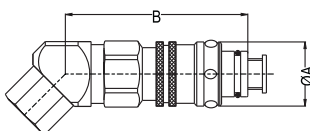
Push-lock hose tail plug with valve 135°  
Stecker mit 135°  
Schnellsteck - Schlauchtülle und Ventil



Female threaded plug with Valve  
Stecker mit Innengewinde und Ventil



Female threaded plug with Valve 90°  
Stecker mit 90° Innengewinde und Ventil



Female threaded plug with Valve 135°  
Stecker mit 135° Innengewinde und Ventil

| ØF / øi                 |      | Order No / Bestellnr. | Dimension in / Abmessungen in (mm) |    |    |
|-------------------------|------|-----------------------|------------------------------------|----|----|
| Connection - Anschlüsse |      |                       | A                                  | B  | C  |
| Ø 13 mm                 | 1/2" | 100.12 FGB 13-90°     | 28                                 | 70 |    |
| Ø 16 mm                 | 5/8" | 100.12 FGB 16-90°     | 28                                 | 70 |    |
| Ø 13 mm                 | 3/8" | 100.12 FGB 13-135°    | 28                                 | 70 |    |
| Ø 16 mm                 | 1/2" | 100.12 FGB 16-135°    | 28                                 | 70 |    |
| BSP                     | 1/2" | 100.12 DGB 21         | 28                                 | 80 |    |
| NPT                     | 1/2" | 100.12 NGB 21         | 28                                 | 80 |    |
| BSP                     | 3/8" | 100.12 DGB 17-90°     | 28                                 | 70 | 29 |
| NPT                     | 3/8" | 100.12 NGB 17-90°     | 28                                 | 70 | 29 |
| BSP                     | 1/2" | 100.12 DGB 21-90°     | 28                                 | 70 | 29 |
| NPT                     | 1/2" | 100.12 NGB 21-90°     | 28                                 | 70 | 29 |
| BSP                     | 3/8" | 100.12 DGB 17-135°    | 28                                 | 54 | 10 |
| NPT                     | 3/8" | 100.12 NGB 17-135°    | 28                                 | 54 | 10 |
| BSP                     | 1/2" | 100.12 DGB 21-135°    | 28                                 | 54 | 16 |
| NPT                     | 1/2" | 100.12 NGB 21-135°    | 28                                 | 54 | 16 |



SERIE 100.12 ■

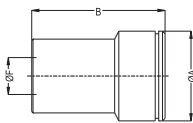
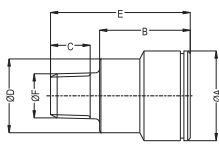
COUPLINGS, MULTICOUPLINGS & MOULD COOLING PRODUCTS

KUPPLUNGEN, MULTIKUPPLUNGEN & KÜHLUNGSELEMENTE FÜR WERKZEUGE



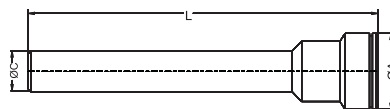
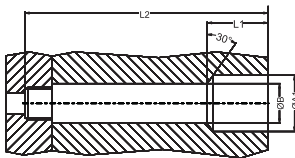
- Options - Optionen  
 B - Bleue - Blau  
 R - Red - Rot  
 V - Seal - FPM FPM Dichtung  
 E - EPDM Seal - EPDM Dichtung

Socket / Buchse



| F Thread Gewinde | Order No / Bestellnr.<br>Without Collar<br>Ohne Ring | Assembling Sizes / Abmessungen für die Montage |    |    |    |    | Allen SW |
|------------------|--|--|----|----|----|----|----------|
|                  |  | A  | B  | C  | D  | E  |          |
| BSPT 3/8"        | 100.12 RU 17   | 32   | 28 | 11 | 25 | 41 | 10       |
| BSPT 1/2"        | 100.12 RU 21   | 32   | 28 | 16 | 25 | 44 | 14       |
| BSPT 3/4"        | 100.12 RU 26   | 32   | 13 | 14 |    | 32 | 14       |
| NPT 3/8"         | 100.12 TU 17   | 32   | 28 | 11 | 25 | 41 | 3/8"     |
| NPT 1/2"         | 100.12 TU 21   | 32   | 28 | 14 | 25 | 44 | 9/16"    |
| NPT 3/4"         | 100.12 TU 26   | 32   | 13 | 14 |    | 32 | 9/16"    |
| BSP 3/8"         | 100.12 DU 17   | 32   | 49 |    |    |    | 12       |
| BSP 1/2"         | 100.12 DU 21   | 32   | 50 |    |    |    | 12       |

Extension Plug ( Smooth version ) / Verlängerungsbuchse ( ohne Gewinde )



| Serie  | ØC   | L   | Order No / Bestellnr.<br>Without Collar<br>Ohne Ring | Assembling Sizes / Abmessungen für die Montage |        |    |     |    | SW |
|--------|------|-----|--|--|--------|----|-----|----|----|
|        |      |     |  | L1   | L2     | ØA | ØA1 | ØB |    |
| 100.12 | 17.2 | 50  | 100.12-17 BU 50                                      | 41   | L-8.5  | 32 | 33  | 18 | 14 |
|        | 17.2 | 100 | 100.12-17 BU 100                                     | 41   | L-8.5  | 32 | 33  | 18 | 14 |
|        | 17.2 | 150 | 100.12-17 BU 150                                     | 41   | L-8.5  | 32 | 33  | 18 | 14 |
|        | 17.2 | 200 | 100.12-17 BU 200                                     | 41   | L-8.5  | 32 | 33  | 18 | 14 |
|        | 17.2 | 250 | 100.12-17 BU 250                                     | 41   | L-8.5  | 32 | 33  | 18 | 14 |
| 100.12 | 21.3 | 50  | 100.12-21 BU 50                                      | 43   | L-11.5 | 32 | 33  | 22 | 14 |
|        | 21.3 | 100 | 100.12-21 BU 100                                     | 43   | L-11.5 | 32 | 33  | 22 | 14 |
|        | 21.3 | 150 | 100.12-21 BU 150                                     | 43   | L-11.5 | 32 | 33  | 22 | 14 |
|        | 21.3 | 200 | 100.12-21 BU 200                                     | 43   | L-11.5 | 32 | 33  | 22 | 14 |
|        | 21.3 | 250 | 100.12-21 BU 250                                     | 43   | L-11.5 | 32 | 33  | 22 | 14 |

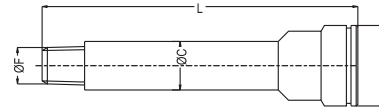
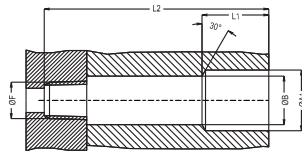
**COUPLINGS, MULTICOUPLINGS & MOULD COOLING PRODUCTS**

KUPPLUNGEN, MULTIKUPPLUNGEN & KÜHLUNGSELEMENTE FÜR WERKZEUGE

**SERIE 100.12**



Extension ( conical threaded version BSPT-NPT )  
Verlängerungsbuchse ( konisches Gewinde BSPT-NPT )



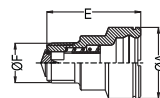
| Serie                  | F<br>Thread<br>Gewinde | L<br>min./max. | Order No / Bestellnr.<br>Without Collar<br>Ohne Ring | Assembling Sizes / Abmessungen für die Montage |        |    |     |    |      | Allen<br>SW | Torque<br>Drehmoment<br>(m/daN) |
|------------------------|------------------------|----------------|--|--|--------|----|-----|----|------|-------------|---------------------------------|
|                        |                        |                |  | L1   | L2     | ØA | ØA1 | ØB | ØC   |             |                                 |
| <b>100.12<br/>BSPT</b> | BSPT 3/8"              | 56/100         | 100.12-100 R17                                       | 43   | L-8.5  | 32 | 33  | 18 | 17.2 | 14          | 3                               |
|                        | BSPT 3/8"              | 100/150        | 100.12-150 R17                                       | 43   | L-8.5  | 32 | 33  | 18 | 17.2 | 14          | 3                               |
|                        | BSPT 3/8"              | 150/200        | 100.12-200 R17                                       | 43   | L-8.5  | 32 | 33  | 18 | 17.2 | 14          | 3                               |
|                        | BSPT 3/8"              | 200/250        | 100.12-250 R17                                       | 43   | L-8.5  | 32 | 33  | 18 | 17.2 | 14          | 3                               |
| <b>100.12<br/>NPT</b>  | NPT 3/8"               | 56/100         | 100.12-100 T17                                       | 43   | L-8.5  | 32 | 33  | 18 | 17.2 | 3/8"        | 3                               |
|                        | NPT 3/8"               | 100/150        | 100.12-150 T17                                       | 43   | L-8.5  | 32 | 33  | 18 | 17.2 | 3/8"        | 3                               |
|                        | NPT 3/8"               | 150/200        | 100.12-200 T17                                       | 43   | L-8.5  | 32 | 33  | 18 | 17.2 | 3/8"        | 3                               |
|                        | NPT 3/8"               | 200/250        | 100.12-250 T17                                       | 43   | L-8.5  | 32 | 33  | 18 | 17.2 | 3/8"        | 3                               |
| <b>100.12<br/>BSPT</b> | BSPT 1/2"              | 56/100         | 100.12-100 R21                                       | 45   | L-11.5 | 32 | 33  | 22 | 21.3 | 14          | 5                               |
|                        | BSPT 1/2"              | 100/150        | 100.12-150 R21                                       | 45   | L-11.5 | 32 | 33  | 22 | 21.3 | 14          | 5                               |
|                        | BSPT 1/2"              | 150/200        | 100.12-200 R21                                       | 45   | L-11.5 | 32 | 33  | 22 | 21.3 | 14          | 5                               |
|                        | BSPT 1/2"              | 200/250        | 100.12-250 R21                                       | 45   | L-11.5 | 32 | 33  | 22 | 21.3 | 14          | 5                               |
| <b>100.12<br/>NPT</b>  | NPT 1/2"               | 56/100         | 100.12-100 T21                                       | 45   | L-11.5 | 32 | 33  | 22 | 21.3 | 9/16"       | 5                               |
|                        | NPT 1/2"               | 100/150        | 100.12-150 T21                                       | 45   | L-11.5 | 32 | 33  | 22 | 21.3 | 9/16"       | 5                               |
|                        | NPT 1/2"               | 150/200        | 100.12-200 T21                                       | 45   | L-11.5 | 32 | 33  | 22 | 21.3 | 9/16"       | 5                               |
|                        | NPT 1/2"               | 200/250        | 100.12-250 T21                                       | 45   | L-11.5 | 32 | 33  | 22 | 21.3 | 9/16"       | 5                               |

**Male Threaded socket with Valve (100.12)  
Buchse mit Aussengewinde mit Ventil (100.12)**



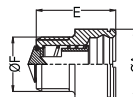
| Connection<br>Anschlüsse<br>ØF | Order No - Bestellnr.<br>Without Collar - Ohne Ring | Dimensions in<br>Abmessungen in (mm) |    |   |
|--------------------------------|---|--------------------------------------|----|---|
|                                |   | ØA                                   | ØD | L |

Male thread socket with valve  
Buchse mit Aussengewinde



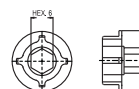
|          |               |    |    |      |
|----------|---------------|----|----|------|
| BSP 3/8" | 100.12 EUB 17 | 32 | 24 | 40.5 |
| BSP 1/2" | 100.12 EUB 21 | 32 | 24 | 42.5 |
| BSP 3/4" | 100.12 EUB 26 | 32 | 30 | 38.5 |

Male thread socket with valve  
Buchse mit Aussengewinde



|          |               |    |  |    |
|----------|---------------|----|--|----|
| BSP 1/2" | 100.12 DUB 21 | 32 |  | 62 |
| BSP 3/4" | 100.12 DUB 26 | 32 |  | 62 |

Assembling apparatus  
Montagewerkzeug



100.12 EUB 00