

**COUPLINGS, MULTICOUPLINGS & MOULD COOLING PRODUCTS**

KUPPLUNGEN, MULTIKUPPLUNGEN & KUHLUNGSELEMENTE FÜR WERKZEUGE

**SERIE 100.08**



**9 Balls / 20% High Flow - 20% mehr Durchfluß**



**Standard version - Standardversion**

Brass - Messing  
NBR Nitrile (Ni)  
Nickel plated - Vernickelt  
Locking balls 9 units - 9 Kugeln

**Options - Optionen**

B - Blue - Blau  
R - Red - Rot  
V - FPM Seal - FPM Dichtung  
E - EPDM Seal - EPDM Dichtung

**Material - Material**

Coupler Body - Kupplungsgrundkörper : Brass Nickel Plated - Messing Vernickelt  
Sleeve - Hülse : Brass Nickel Plated - Messing Vernickelt  
Springs - Federn : Stainless Steel - Edelstahl  
Locking O-Ring - Sprengring : Stainless Steel - Edelstahl  
Balls - Kugeln : Stainless Steel - Edelstahl  
Seals - Dichtungen : NBR Nitrile (Ni)  
Plug - Nippel : Brass Nickel Plated - Messing Vernickelt

**Interchangeability - Kompatibilität**  
STAUBLI RPL

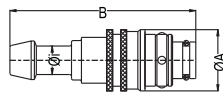
**Temperature Range - Temperaturbereich**  
-20°C +100°C ( -40°F +250°F )

**Working Pressure - Betriebsdruck**  
0 - 10 bar (0 - 160 PSI)

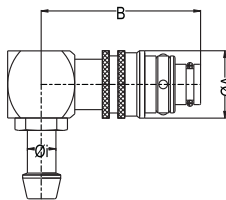
**Flow capacity - Nennweite**  
NW 8.3

• **For optional orders please add the symbol of your option end of the order no.**  
• Bei Bestellungen Kennbuchstabe bitte hinzufügen ( Beispiel: 100.08.HG08V )

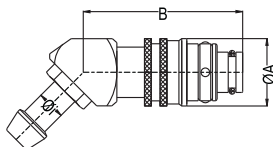
**Plug Stecker**



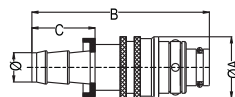
Standard hose tail plug  
Stecker mit Schlauchtülle



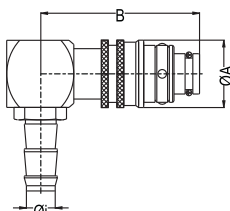
Standard hose tail plug 90°  
Stecker mit 90° Schlauchtülle



Standard hose tail plug 135°  
Stecker mit 135° Schlauchtülle



Push-lock hose tail plug  
Stecker mit Schnellsteck - Schlauchtülle



Push-lock hose tail plug 90°  
Stecker mit 90° Schnellsteck - Schlauchtülle

Ø Connection - Anschlüsse		Order No / Bestellnr.	Dimension in / Abmessungen in (mm)		
			A	B	C
Ø 6 mm	1/4"	100.08 HGF 06	20	37.5	
Ø 8 mm	5/16"	100.08 HGF 08	20	37.5	
Ø 10 mm	3/8"	100.08 HGF 10	20	37.5	
Ø 12 mm	15/32"	100.08 HGF 12	20	37.5	
Ø 13 mm	1/2"	100.08 HGF 13	20	37.5	

Ø 6 mm	1/4"	100.08 HGF 06-90°	20	45.5
Ø 8 mm	5/16"	100.08 HGF 08-90°	20	45.5
Ø 10 mm	3/8"	100.08 HGF 10-90°	20	45.5
Ø 12 mm	15/32"	100.08 HGF 12-90°	20	45.5
Ø 13 mm	1/2"	100.08 HGF 13-90°	20	45.5

Ø 6 mm	1/4"	100.08 HGF 06-135°	20	47.5
Ø 8 mm	5/16"	100.08 HGF 08-135°	20	47.5
Ø 10 mm	3/8"	100.08 HGF 10-135°	20	47.5
Ø 12 mm	15/32"	100.08 HGF 12-135°	20	47.5
Ø 13 mm	1/2"	100.08 HGF 13-135°	20	47.5

Ø 10 mm	3/8"	100.08 FGF 10	20	37
Ø 13 mm	1/2"	100.08 FGF 13	20	40

Ø 10 mm	3/8"	100.08 FGF 10-90°	20	45.5
Ø 13 mm	1/2"	100.08 FGF 13-90°	20	45.5



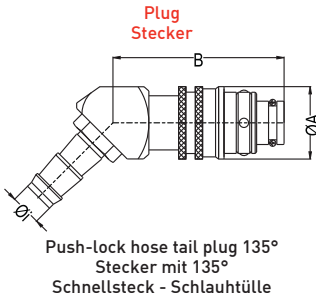
SERIE 100.08

COUPLINGS, MULTICOUPLINGS & MOULD COOLING PRODUCTS

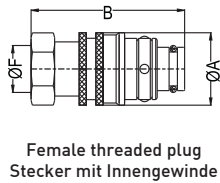
KUPPLUNGEN, MULTIKUPPLUNGEN & KÜHLUNGSELEMENTE FÜR WERKZEUGE



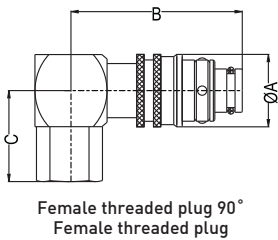
9 Balls / 20% High Flow - 20% mehr Durchfluß



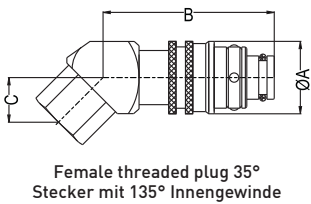
Connection - Anschlüsse	Order No / Bestellnr.	Dimension in / Abmessungen in (mm)		
		A	B	C
Ø 10 mm 3/8"	100.08 FGF 10-135°	20	47.5	
Ø 13 mm 1/2"	100.08 FGF 13-135°	20	47.5	



BSP 1/4"	100.08 DGF 13	20	43	
BSP 3/8"	100.08 DGF 17	20	52	
NPT 1/4"	100.08 NGF 13	20	43	
NPT 3/8"	100.08 NGF 17	20	52	

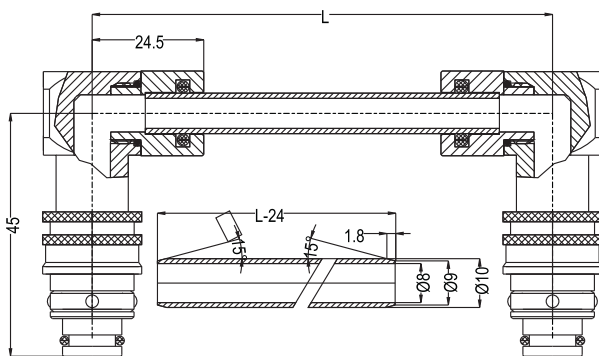


BSP 1/4"	100.08 DGF 13-90°	20	45.5	24
BSP 3/8"	100.08 DGF 17-90°	20	45.5	24
NPT 1/4"	100.08 NGF 13-90°	20	45.5	27
NPT 3/8"	100.08 NGF 17-90°	20	45.5	27



BSP 1/4"	100.08 DGF 13-135°	20	47.5	17
BSP 3/8"	100.08 DGF 17-135°	20	47.5	17
NPT 1/4"	100.08 NGF 13-135°	20	47.5	20
NPT 3/8"	100.08 NGF 17-135°	20	47.5	20

Diverting connector Umlenstecker ( For / Für TST 100.08 )



Order No / Bestellnr.	L	L-24
100.08 - KG 125	125	101
100.08 - KG 250	250	226
100.08 - KG 500	500	476

Brass Tube PB 10x1 / Messingrohr PB 10x1

100.08 KG 00

**COUPLINGS, MULTICOUPLINGS & MOULD COOLING PRODUCTS**

KUPPLUNGEN, MULTIKUPPLUNGEN & KÜHLUNGSELEMENTE FÜR WERKZEUGE

**SERIE 100.08**



9 Balls / With Valve / mit Ventil



**Standard version - Standardversion**

Brass - Messing  
NBR Nitrile (Ni)  
Nickel plated - Vernickelt  
Locking balls 9 units - 9 Kugeln

**Options - Optionen**

B - Blue - Blau  
R - Red - Rot  
V - FPM Seal - FPM Dichtung  
E - EPDM Seal - EPDM Dichtung

**Material - Material**

Coupler Body - Kupplungsgrundkörper : Brass Nickel Plated - Messing Vernickelt  
Sleeve - Hülse : Brass Nickel Plated - Messing Vernickelt  
Springs - Federn : Stainless Steel - Edelstahl  
Locking O-Ring - Sprenging : Stainless Steel - Edelstahl  
Balls - Kugeln : Stainless Steel - Edelstahl  
Seals - Dichtungen : NBR Nitrile (Ni)  
Plug - Nippel : Brass Nickel Plated - Messing Vernickelt

**Interchangeability - Kompatibilität**  
STAUBLI RPL

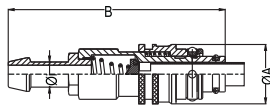
**Temperature Range - Temperaturbereich**  
-20°C +100°C ( -40°F +250°F )

**Working Pressure - Betriebsdruck**  
0 - 10 bar (0 - 160 PSI)

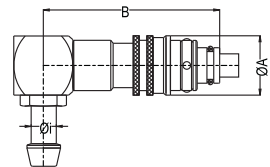
**Flow capacity - Nennweite**  
NW 8.3

For optional orders please add the symbol of your option end of the order no.  
Bei Bestellungen Kennbuchstabe bitte hinzufügen ( Beispiel: 100.08.HG08V )

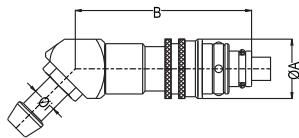
Plug Stecker



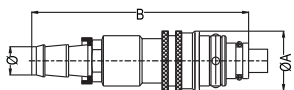
Standard hose tail plug with valve  
Stecker mit Schlauchtülle und Ventil



Standard hose tail plug with valve 90°  
Stecker mit 90° Schlauchtülle und Ventil



Standard hose tail plug with valve 135°  
Stecker mit 135° Schlauchtülle und Ventil



Push-lock hose tail plug with valve  
Stecker mit Schnellsteck - Schlauchtülle und Ventil

Connection - Anschlüsse	Order No / Bestellnr.	Dimension in / Abmessungen in (mm)		
		A	B	C
Ø 6 mm 1/4"	100.08 HGB 06	20	59	
Ø 8 mm 5/16"	100.08 HGB 08	20	59	
Ø 10 mm 3/8"	100.08 HGB 10	20	59	
Ø 12 mm 15/32"	100.08 HGB 12	20	59	
Ø 13 mm 1/2"	100.08 HGB 13	20	59	
<hr/>				
Ø 6 mm 1/4"	100.08 HGB 06-90°	20	64	
Ø 8 mm 5/16"	100.08 HGB 08-90°	20	64	
Ø 10 mm 3/8"	100.08 HGB 10-90°	20	64	
Ø 12 mm 15/32"	100.08 HGB 12-90°	20	64	
Ø 13 mm 1/2"	100.08 HGB 13-90°	20	64	
<hr/>				
Ø 6 mm 1/4"	100.08 HGB 06-135°	20	64	
Ø 8 mm 5/16"	100.08 HGB 08-135°	20	64	
Ø 10 mm 3/8"	100.08 HGB 10-135°	20	64	
Ø 12 mm 15/32"	100.08 HGB 12-135°	20	64	
Ø 13 mm 1/2"	100.08 HGB 13-135°	20	64	
<hr/>				
Ø 10 mm 3/8"	100.08 FGB 10	20	59	
Ø 13 mm 1/2"	100.08 FGB 13	20	59	



SERIE **100.08**

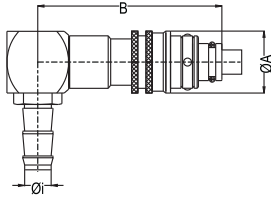
**COUPLINGS, MULTICOUPLINGS & MOULD COOLING PRODUCTS**

KUPPLUNGEN, MULTIKUPPLUNGEN & KÜHLUNGSELEMENTE FÜR WERKZEUGE

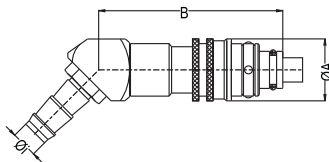


**9 Balls / With Valve / mit Ventil**

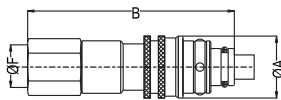
**Plug Stecker**



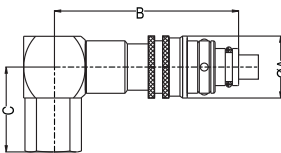
Push-lock hose tail plug with valve 90°  
Stecker mit 90°  
Schnellsteck - Schlauchtülle und Ventil



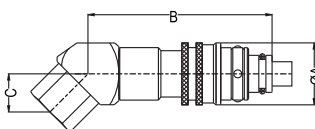
Push-lock hose tail plug with valve 135°  
Stecker mit 135°  
Schnellsteck - Schlauchtülle und Ventil



Female threaded plug with valve  
Stecker mit Innengewinde und Ventil



Female threaded plug with valve 90°  
Stecker mit 90° Innengewinde und Ventil



Female threaded plug with valve 135°  
Stecker mit 135° Innengewinde und Ventil

Ø Connection - Anschlüsse	Order No / Bestellnr.	Dimension in / Abmessungen in (mm)		
		A	B	C

Ø 10 mm    3/8"	100.08 FGB 10-90°	20	64	
Ø 13 mm    1/2"	100.08 FGB 13-90°	20	64	

Ø 10 mm    3/8"	100.08 FGB 10-135°	20	64	
Ø 13 mm    1/2"	100.08 FGB 13-135°	20	64	

BSP 1/4"	100.08 DGB 13	20	57	
BSP 3/8"	100.08 DGB 17	20	57	
NPT 1/4"	100.08 NGB 13	20	60	
NPT 3/8"	100.08 NGB 17	20	60	

BSP 1/4"	100.08 DGB 13-90°	20	54	24
BSP 3/8"	100.08 DGB 17-90°	20	54	24
NPT 1/4"	100.08 NGB 13-90°	20	54	27
NPT 3/8"	100.08 NGB 17-90°	20	54	27

BSP 1/4"	100.08 DGB 13-135°	20	54	17
BSP 3/8"	100.08 DGB 17-135°	20	54	17
NPT 1/4"	100.08 NGB 13-135°	20	54	20
NPT 3/8"	100.08 NGB 17-135°	20	54	20

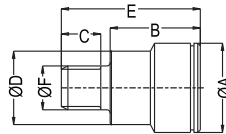
**COUPLINGS, MULTICOUPLINGS & MOULD COOLING PRODUCTS**

KUPPLUNGEN, MULTIKUPPLUNGEN & KÜHLUNGSELEMENTE FÜR WERKZEUGE

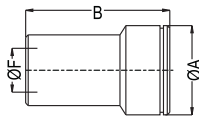
**SERIE 100.08**



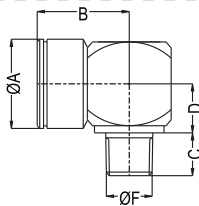
Socket  
Buchse



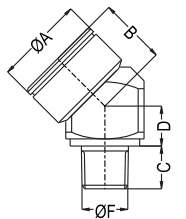
Male threaded socket  
Buchse mit Aussengewinde



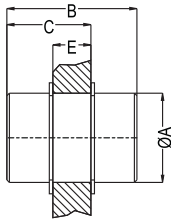
Female threaded socket  
Buchse mit Innengewinde



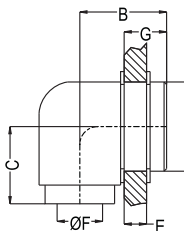
Male threaded Socket 90°  
Buchse mit Aussengewinde



Male threaded socket 135°  
Buchse mit 135° Aussengewinde



Through the wall  
straight connector  
Gerader Anschluss Schott



Through the wall  
90° connector  
90° Anschluss Schott

Ø Connection Anschlüsse	Order No / Bestellnr. Without Collar Ohne Ring	Dimension in / Abmessungen in (mm)					
		A	B	C	D	E	SW
BSPT 1/8"	100.08 RU 10	21	21	8	17.5	31	6
BSPT 1/4"	100.08 RU 13	21	21	10	17.5	33	8
BSPT 3/8"	100.08 RU 17	21	11	11	17.5	24	8
NPT 1/8"	100.08 TU 10	21	21	7	17.5	31	1/4"
NPT 1/4"	100.08 TU 13	21	21	11	17.5	33	5/16"
NPT 3/8"	100.08 TU 17	21	11	11	17.5	24	5/16"
M10x1.0	100.08 EUM 10-1	21	21	10	17.5	31	6
M10x1.5	100.08 EUM 10	21	21	20	17.5	31	6
M10x1.5	100.08 EUM 14	21	21	11	17.5	31	8

BSP 1/8"	100.08 DU 10	21	39				8
BSP 1/4"	100.08 DU 13	21	39				8
NPT 1/8"	100.08 NU 10	21	39				5/16"
NPT 1/4"	100.08 NU 13	21	39				5/16"

BSPT 1/8"	100.08 RU 10-90°	21	33	24			20
BSPT 1/4"	100.08 RU 13-90°	21	33	24			20
BSPT 3/8"	100.08 RU 17-90°	21	33	24			20
NPT 1/4"	100.08 TU 13-90°	21	21	11			20

BSPT 1/8"	100.08 RU 10-135°	21	33	24			20
BSPT 1/4"	100.08 RU 13-135°	21	33	24			20
BSPT 3/8"	100.08 RU 17-135°	21	33	24			20
NPT 1/4"	100.08 TU 13-135°	21	21	11			20

	100.08 PU 00	22	35	23			10 MAX.
--	--------------	----	----	----	--	--	------------

BSP 1/4"	100.08 PU 13-90°	22	22	21			10 MAX.
----------	------------------	----	----	----	--	--	------------



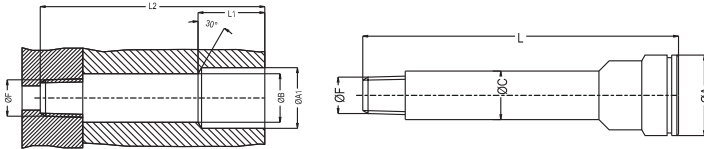
SERIE **100.08**

**COUPLINGS, MULTICOUPLINGS & MOULD COOLING PRODUCTS**

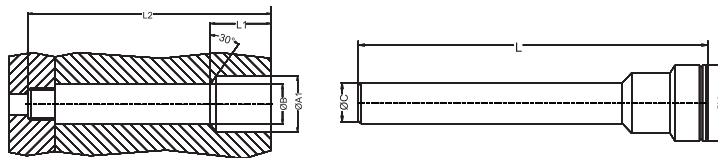
KUPPLUNGEN, MULTIKUPPLUNGEN & KÜHLUNGSELEMENTE FÜR WERKZEUGE



Extension ( conical threaded version BSPT-NPT )  
Verlängerungsbuchse ( konisches Gewinde BSPT-NPT )



Serie	F Thread Gewinde	L min./max.	Order No / Bestellnr. Without Collar Ohne Ring	Assembling Sizes / Abmessungen für die Montage						Allen SW	Torque Drehmoment (m/daN)
				L1	L2	ØA	ØAI	ØB	ØC		
<b>100.08 BSPT</b>	BSPT 1/8"	33/100	100.08-100 R10	23	L-5.5	21	22	11	10.2	6	1
	BSPT 1/8"	100/150	100.08-150 R10	23	L-5.5	21	22	11	10.2	6	1
	BSPT 1/8"	150/200	100.08-200 R10	23	L-5.5	21	22	11	10.2	6	1
	BSPT 1/8"	200/250	100.08-250 R10	23	L-5.5	21	22	11	10.2	6	1
<b>100.08 NPT</b>	NPT 1/8"	33/100	100.08-100 T10	23	L-5.5	21	22	11	10.2	1/4'	1
	NPT 1/8"	100/150	100.08-150 T10	23	L-5.5	21	22	11	10.2	1/4'	1
	NPT 1/8"	150/200	100.08-200 T10	23	L-5.5	21	22	11	10.2	1/4'	1
	NPT 1/8"	200/250	100.08-250 T10	23	L-5.5	21	22	11	10.2	1/4'	1
<b>100.08 BSPT</b>	BSPT 1/4"	33/100	100.08-100 R13	23	L-7.5	21	22	14	13.5	8	3
	BSPT 1/4"	100/150	100.08-150 R13	23	L-7.5	21	22	14	13.5	8	3
	BSPT 1/4"	150/200	100.08-200 R13	23	L-7.5	21	22	14	13.5	8	3
	BSPT 1/4"	200/250	100.08-250 R13	23	L-7.5	21	22	14	13.5	8	3
<b>100.08 NPT</b>	NPT 1/4"	33/100	100.08-100 T13	23	L-5.5	21	22	11	10.2	1/4'	1
	NPT 1/4"	100/150	100.08-150 T13	23	L-5.5	21	22	11	10.2	1/4'	1
	NPT 1/4"	150/200	100.08-200 T13	23	L-5.5	21	22	11	10.2	1/4'	1
	NPT 1/4"	200/250	100.08-250 T13	23	L-5.5	21	22	11	10.2	1/4'	1



Serie	ØC	L	Order No / Bestellnr. Without Collar Ohne Ring	Assembling Sizes / Abmessungen für die Montage					Allen SW
				L1	L2	ØA	ØAI	ØB	
<b>100.08</b>	10.2	50	100.08-10 BU 50	23	L-5.5	21	22	11	6
	10.2	100	100.08-10 BU 100	23	L-5.5	21	22	11	6
	10.2	150	100.08-10 BU 150	23	L-5.5	21	22	11	6
	10.2	200	100.08-10 BU 200	23	L-5.5	21	22	11	6
<b>100.08</b>	13.5	50	100.08-13 BU 50	23	L-7.5	21	22	14	8
	13.5	100	100.08-13 BU 100	23	L-7.5	21	22	14	8
	13.5	150	100.08-13 BU 150	23	L-7.5	21	22	14	8
	13.5	200	100.08-13 BU 200	23	L-7.5	21	22	14	8
	13.5	250	100.08-13 BU 250	23	L-7.5	21	22	14	8

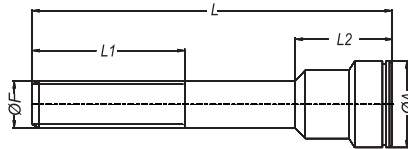
**COUPLINGS, MULTICOUPLINGS & MOULD COOLING PRODUCTS**

KUPPLUNGEN, MULTIKUPPLUNGEN & KÜHLUNGSELEMENTE FÜR WERKZEUGE

**SERIE 100.08**

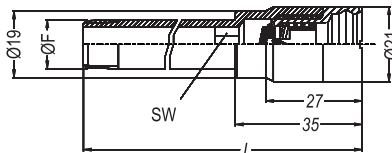


Extension ( cylindrical BSP threaded version )  
Verlängerungsbuchse ( zylindrisches - BSP Gewinde )



Serie	F Thread Gewinde	L min./max.	Order No / Bestellnr. Without Collar Ohne Ring	Assembling Sizes Abmessungen für die Montage			Allen SW
				L1	L2	ØA	
100.08	BSP 1/8"	50	100.08-50 RF10	26	21	21	6
	BSP 1/8"	100	100.08-100 RF10	60	21	21	6
	BSP 1/8"	150	100.08-150 RF10	60	21	21	6
100.08	BSP 1/4"	50	100.08-50 RF13	6.5	21	21	8
	BSP 1/4"	100	100.08-100 RF13	60	21	21	8
	BSP 1/4"	150	100.08-150 RF13	60	21	21	8
	BSP 1/4"	200	100.08-200 RF13	60	21	21	8

**Male Threaded Extension Shut-off Plugs Verlängerungsbuchse mit Aussengewinde und Ventil**

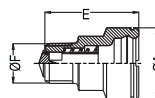


Serie	F Thread Gewinde	L min./max.	Order No / Bestellnr. Without Collar Ohne Ring	Assembling Sizes Abmessungen für die Montage			Allen SW
				L1	L2	ØA	
100.08	BSP 1/8"	50	100.08-50 EUB10	32	L-5.5	22	6
	BSP 1/8"	100	100.08-100 EUB10	32	L-5.5	22	6
	BSP 1/8"	150	100.08-150 EUB10	32	L-5.5	22	6
	BSPT 1/8"	50	100.08-50 RUB10	32	L-5.5	22	6
	BSPT 1/8"	100	100.08-100 RUB10	32	L-5.5	22	6
	BSPT 1/8"	150	100.08-150 RUB10	32	L-5.5	22	6
100.08	BSP 1/4"	50	100.08-50 EUB13	32	L-5.5	22	6
	BSP 1/4"	100	100.08-100 EUB13	32	L-5.5	22	6
	BSP 1/4"	150	100.08-150 EUB13	32	L-5.5	22	6
	BSP 1/4"	200	100.08-200 EUB13	32	L-5.5	22	6
	BSPT 1/4"	50	100.08-50 RUB13	32	L-5.5	22	6
	BSPT 1/4"	100	100.08-100 RUB13	32	L-5.5	22	6
100.08	BSPT 1/4"	150	100.08-150 RUB13	32	L-5.5	22	6
	BSPT 1/4"	200	100.08-200 RUB13	32	L-5.5	22	6

**Male Threaded Shut-off Socket (100.08)  
Buchse mit Aussengewinde mit Ventil (100.08)**

Connection Anschlüsse	Order No - Bestellnr. Without Collar - Ohne Ring	Dimensions in Abmessungen in (mm)	
		ØA	L

Male thread socket with valve  
Buchse mit Aussengewinde



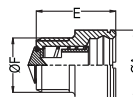
1/4"

100.08 EUB 13

21

36

Male thread socket with valve  
Buchse mit Aussengewinde



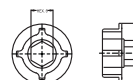
3/8"

100.08 EUB 17

21

28.5

Assembling apparatus  
Montagewerkzeug



100.08 EUB 00