



**COUPLINGS, MULTICOUPLINGS & MOULD COOLING PRODUCTS**

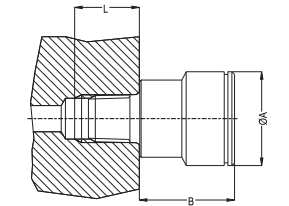
KUPPLUNGEN, MULTIKUPPLUNGEN & KÜHLUNGSELEMENTE FÜR WERKZEUGE

**SERIE 100**

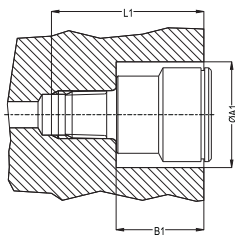


Assembling Dimensions Einbaumaße

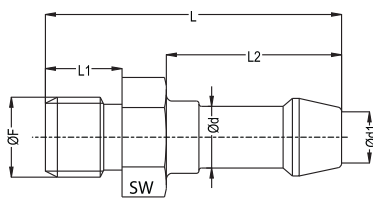
| Serie         | F Thread Gewinde | Slightly raised socket<br>Montiert in der Form |      |        | Flush mounted socket<br>Montiert außerhalb der Form |      |      | Allen SW | Torque Drehmoment (N.m) |
|---------------|------------------|--|------|--------|---|------|------|----------|-------------------------|
|               |                  | ØA   | B    | L min. | ØA1 min   | B1   | L1   |          |                         |
| <b>100.06</b> | 1/8" BSP         | 17   | 20   | 10     | 18.5  | 20.5 | 29.5 | 6        | 15                      |
|               | 1/4" BSP         | 17   | 18   | 13     | 18.5  | 18.5 | 30.5 | 6        | 30                      |
|               | 1/8" NPT         | 17   | 22   | 10     | 18.5  | 22.5 | 31.5 | 1/4"     | 15                      |
|               | 1/4" NPT         | 17   | 20   | 13.5   | 18.5  | 20.5 | 33   | 1/4"     | 30                      |
| <b>100.08</b> | 1/8" BSP         | 21   | 23   | 10     | 22.5  | 24   | 33   | 6        | 15                      |
|               | 1/4" BSP         | 21   | 22   | 12     | 22.5  | 23   | 34   | 8        | 30                      |
|               | 3/8" BSP         | 21   | 12   | 13     | 22.5  | 13   | 25   | 8        | 30                      |
|               | 1/8" NPT         | 21   | 25.5 | 10     | 22.5  | 25.5 | 35   | 1/4"     | 15                      |
|               | 1/4" NPT         | 21   | 24   | 12     | 22.5  | 23.5 | 35.5 | 5/16"    | 30                      |
|               | 3/8" NPT         | 21   | 14   | 13     | 22.5  | 14   | 27   | 5/16"    | 30                      |
| <b>100.12</b> | 3/8" BSP         | 32   | 29   | 13     | 33.5  | 30   | 42   | 10       | 50                      |
|               | 1/2" BSP         | 32   | 10   | 15     | 33.5  | 31   | 45   | 14       | 50                      |
|               | 3/4" BSP         | 32   | 15   | 18     | 33.5  | 20   | 36   | 14       | 50                      |
|               | 3/8" NPT         | 32   | 33   | 13     | 33.5  | 33   | 46   | 3/8"     | 50                      |
|               | 1/2" NPT         | 32   | 35   | 15     | 33.5  | 34.5 | 51   | 9/16"    | 50                      |
|               | 3/4" NPT         | 32   | 17.5 | 18     | 33.5  | 17.5 | 36.5 | 9/16"    | 50                      |



Slightly raised socket  
Montiert außerhalb der Form

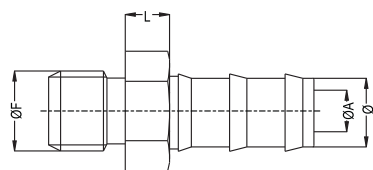


Flush mounted socket  
Montiert in der Form



Nipple with Rubber Hose  
Schlauchtülle mit Aussengewinde

| Order No / Bestellnr. | Male Thread<br>Aussengewinde<br>ØF | Hose Inner/<br>Schlauch ID | d   | L  | L <sub>1</sub> | L <sub>2</sub> | SW |
|-----------------------|------------------------------------|----------------------------|-----|----|----------------|----------------|----|
| TAF 10.04             | BSP 1/8"                           | 4                          | 3   | 38 | 8              | 23             | 14 |
| TAF 10.06             | BSP 1/8"                           | 6                          | 4   | 38 | 8              | 23             | 14 |
| TAF 10.08             | BSP 1/8"                           | 8                          | 5.5 | 43 | 8              | 28             | 14 |
| TAF 10.10             | BSP 1/8"                           | 10                         | 5.5 | 43 | 8              | 28             | 14 |
| TAF 13.06             | BSP 1/4"                           | 6                          | 4   | 41 | 11             | 28             | 17 |
| TAF 13.08             | BSP 1/4"                           | 8                          | 5.5 | 46 | 11             | 33             | 17 |
| TAF 13.09             | BSP 1/4"                           | 9                          | 6   | 46 | 11             | 33             | 17 |
| TAF 13.10             | BSP 1/4"                           | 10                         | 7   | 46 | 11             | 33             | 17 |
| TAF 13.13             | BSP 1/4"                           | 13                         | 8   | 51 | 11             | 33             | 17 |
| TAF 17.08             | BSP 3/8"                           | 8                          | 5.5 | 47 | 12             | 28             | 19 |
| TAF 17.10             | BSP 3/8"                           | 10                         | 7   | 47 | 12             | 28             | 19 |
| TAF 17.13             | BSP 3/8"                           | 13                         | 9   | 52 | 12             | 33             | 19 |
| TAF 17.16             | BSP 3/8"                           | 16                         | 11  | 52 | 12             | 33             | 19 |
| TAF 21.13             | BSP 1/2"                           | 13                         | 9   | 54 | 14             | 33             | 23 |
| TAF 21.16             | BSP 1/2"                           | 16                         | 11  | 54 | 14             | 33             | 23 |
| TAF 26.16             | BSP 3/4"                           | 16                         | 13  | 58 | 16             | 33             | 30 |
| TAF 26.19             | BSP 3/4"                           | 19                         | 16  | 58 | 16             | 33             | 30 |



Push Lock Hose Nipple  
Schnellsteck - Schlauchtülle

| Order No / Bestellnr. | F-Ød<br>Connection /Anschlüsse | Ød   | Ød1 | L  |
|-----------------------|--------------------------------|------|-----|----|
| EHF 13-08             | BSP 1/4" - Ø 7.7               | 1/4" | 5.5 | 7  |
| EHF 13-10             | BSP 1/4" - Ø 9.7               | 3/8" | 7.5 | 7  |
| EHF 13-13             | BSP 1/4" - Ø 12.7              | 1/2" | 9   | 8  |
| EHF 17-10             | BSP 3/8" - Ø 9.7               | 3/8" | 7   | 7  |
| EHF 17-13             | BSP 3/8" - Ø 12.7              | 1/2" | 9   | 8  |
| EHF 17-16             | BSP 3/8" - Ø 15.9              | 5/8" | 12  | 8  |
| EHF 21-13             | BSP 1/2" - Ø 12.7              | 1/2" | 10  | 8  |
| EHF 21-16             | BSP 1/2" - Ø 15.9              | 5/8" | 12  | 8  |
| EHF 26-16             | BSP 3/4" - Ø 15.9              | 1/2" | 13  | 10 |
| EHF 26-19             | BSP 3/4" - Ø 15.9              | 3/4" | 16  | 10 |

**COUPLINGS, MULTICOUPLINGS &  
MOULD COOLING PRODUCTS**

KUPPLUNGEN, MULTIKUPPLUNGEN &  
KÜHLUNGSELEMENTE FÜR WERKZEUGE

**SERIE 100**



**Water Drain Gun From the Mould  
Wasserpistole für das Werkzeug**

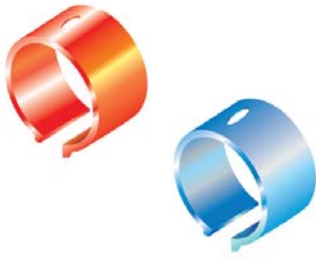


| Serie  | Order No<br>Bestellnr. |
|--------|------------------------|
| 100-08 | TS 100-08              |
| 100.12 | TS 100.12              |

**Water Drain Gun From the Injection Machine  
Wasserpistole für die Spritzgußmaschine**



| Serie  | Order No<br>Bestellnr. |
|--------|------------------------|
| 100-08 | TSM 100-08             |
| 100.12 | TSM 100.12             |




SERIE 100 ■

**COUPLINGS, MULTICOUPLINGS & MOULD COOLING PRODUCTS**


KUPPLUNGEN, MULTIKUPPLUNGEN & KÜHLUNGSELEMENTE FÜR WERKZEUGE



**Spare O-Ring Ersatz O-Ring (NBR)**

|  | Serie  | Order No / Bestellnr. | Temperature / Temperatur |
|--|--------|-----------------------|--------------------------|
| <br>Nitril (N) | 100.08 | CG 100.06N            | -15°C / +100°C           |
|  | 100.08 | CG 100.08N            | -4°F / +212°F            |
|  | 100.12 | CG 100.12N            |                          |

**Spare O-Ring Ersatz O-Ring (NBR)**

|  | Serie  | Order No / Bestellnr. | Temperature / Temperatur |
|--|--------|-----------------------|--------------------------|
| <br>Viton (V) | 100.06 | CG 100.06V            | -15°C / +200°C           |
|  | 100.08 | CG 100.08V            | -4°F / +392°F            |
|  | 100.12 | CG 100.012V           |                          |

Packaging Size : 25 pcs / Verpackungseinheit 25 Stück

**Colour identification Rings for Sockets / Markierungsringe für Kupplung**



Blue / Blau

| Serie  | Order No / Bestellnr. |
|--------|-----------------------|
| 100.06 | 100.06 KB             |
| 100.08 | 100.08 KB             |
| 100.12 | 100.12 KB             |



Red / Rot

| Serie  | Order No / Bestellnr. |
|--------|-----------------------|
| 100.06 | 100.06 KR             |
| 100.08 | 100.08 KR             |
| 100.12 | 100.12 KR             |

Packaging Size : 25 pcs / Verpackungseinheit 25 Stück

**Colour identification Rings for Nipples / Markierungsringe für Nippel**



Blue / Blau

| Serie  | Order No / Bestellnr. |
|--------|-----------------------|
| 100.06 | 100.06 SB             |
| 100.08 | 100.08 SB             |
| 100.12 | 100.12 SB             |



Red / Rot

| Serie  | Order No / Bestellnr. |
|--------|-----------------------|
| 100.06 | 100.06 SR             |
| 100.08 | 100.08 SR             |
| 100.12 | 100.12 SR             |

Packaging Size : 25 pcs / Verpackungseinheit 25 Stück

**Colour identification collar for hoses / Markierungsringe für Schlauch** Packaging Size : 25 pcs / Verpackungseinheit 25 Stück



RH Serie

| Order No / Bestellnr. | Collar Colour / Ringsfarbe | Hose Outer Dia. / Nippel-Aussendurchmesser |
|-----------------------|----------------------------|--|
| RH 13                 | Red / Rot                  | Ø 13 to 17 mm / zwischen Ø13-17 mm         |
| RH 17                 | Red / Rot                  | Ø 17 to 24 mm / zwischen Ø 17-24 mm        |
| RH 24                 | Red / Rot                  | Ø 24 to 28 mm / zwischen Ø 24-28 mm        |



BH Serie

|       |             |                                     |
|-------|-------------|-------------------------------------|
| BH 13 | Blue / Blau | Ø 13 to 17 mm / zwischen Ø13-17 mm  |
| BH 17 | Blue / Blau | Ø 17 to 24 mm / zwischen Ø 17-24 mm |
| BH 24 | Blue / Blau | Ø 24 to 28 mm / zwischen Ø 24-28 mm |

The collar has numbers from 0 to 9 when ordering please add the number of colour end of the order no.

Examples : RH 13.0 (0 Number Red Collar for 13 mm hoses) Packaging: Bag of 25 red or blue collars of the same numbers

Die Kragen haben Nummern von 0-9. Bei Bestellung geben Sie bitte die gewünschte Nr. am Ende der Bestellnummer an.

Beispiel RH13.=Nummer 0 für Schlauchdurchmesser 13 mm in roter Farbe. Verpackung : 25 Stück einer Farbe mit derselben Nummer.