

COUPLINGS, MULTICOUPLINGS &
MOULD COOLING PRODUCTS

SERIE 059,060,090,190

KUPPLUNGEN, MULTIKUPPLUNGEN &
KÜHLUNGSELEMENTE FÜR WERKZEUGE



Interchangeability - Kompatibilität
HASCO, DYROS, EOC, PARADISI (EURO
CONNECTOR)

Temperature Range - Temperaturbereich
-20°C +100°C (-40°F +250°F) Nitril (N)
-20°C +200°C (-40°F +390°F) Viton (V)

Working Pressure - Betriebsdruck
0 - 10 bar (0 - 145 PSI) TST 059
0 - 10 bar (0 - 145 PSI) TST 060
0 - 15 bar (0 - 220 PSI) TST 090
0 - 20 bar (0 - 290 PSI) TST 190

Flow capacity - Nennweiten
NW 2.7 TST 059
NW 6 TST 060
NW 9 TST 090
NW 13 TST 190

Standard version - Standardversion
Brass - Messing
Viton (V)

Options - Optionen
K - Chrome plated - Verchromt
N - Nickel plated - Vernickelt
S - Stainless Steel - Edelstahl

For optional orders please add the symbol of your
option end of the order no.
Bei Bestellungen Kennbuchstabe bitte hinzufügen
(Bestellungen: 090 EG 14-K-N)

Material - Material

Coupler Body- Kupplungsgrundkörper	: Brass - Messing
Sleeve - Hülse	: Brass - Messing
Valve - Ventil	: Brass - Messing
Springs - Federn	: Stainless Steel - Edelstahl
Locking O-Ring- Sprengring	: Stainless Steel - Edelstahl
Balls - Kugeln	: Stainless Steel - Edelstahl
Seals - Dichtungen	: Viton (V)
Plug - Nippel	: Brass - Messing

Using Area:

- On cooling system of plastic zamak, brass and aluminium injection moulds
- On cleaning and washing systems of machines
 - On hot oil - water lines connection
 - All industries
 - On steam line

Anwendungsbereiche:

- An Kühlsysteme für Kunststoff-, Zinkdruckguß, Messing- und Aluminium - Kokillenformen
- Reinigungs- und Waschsyste von Maschinen
 - Temperierung (Wasser/Öl)
 - Alle Industriezweige
 - Dampfleitungen



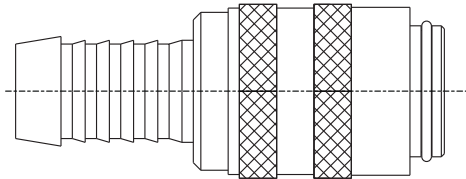
COUPLINGS, MULTICOUPLINGS & MOULD COOLING PRODUCTS

KUPPLUNGEN, MULTIKUPPLUNGEN & KÜHLUNGSELEMENTE FÜR WERKZEUGE

SERIE 059,060,090,190



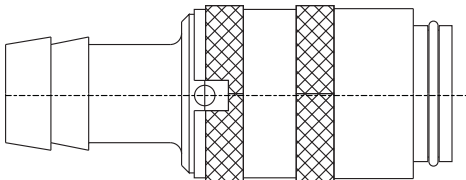
Options - Optionen



Hose Tail Options / Schlauchanschluss Option

For this type hose tail please add the FHG symbol of your option in side of the order no. For example CSK 090 **FHG 13**

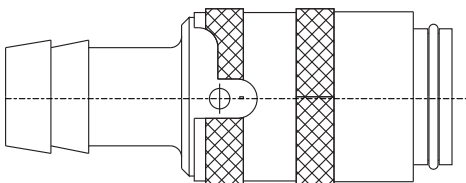
Für diesen Schlauchanschluss fügen Sie FHG zur Artikelnummer hinzu. Z.B. CSK 090 **FHG 13**



E1 Type Safety coupler / S Sicherheitsverriegelung

Please add the symbol E1 add the symbol of your option end of the order no. For example CSK 090 - 13 - E1

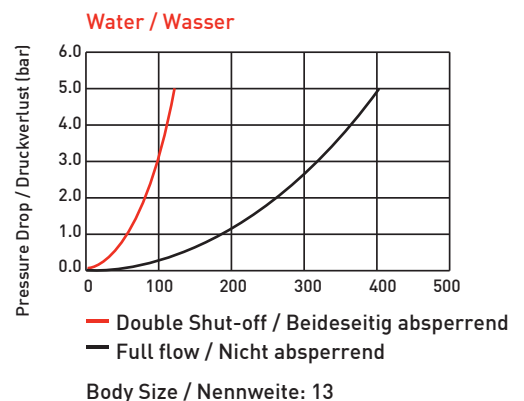
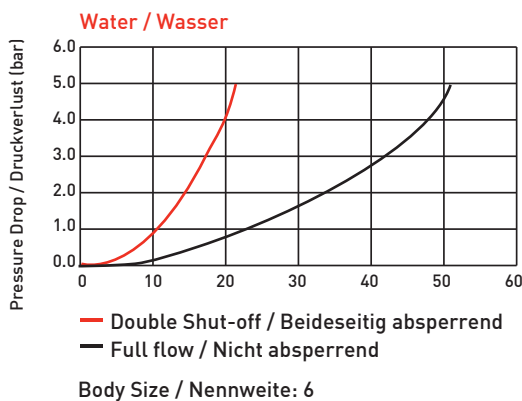
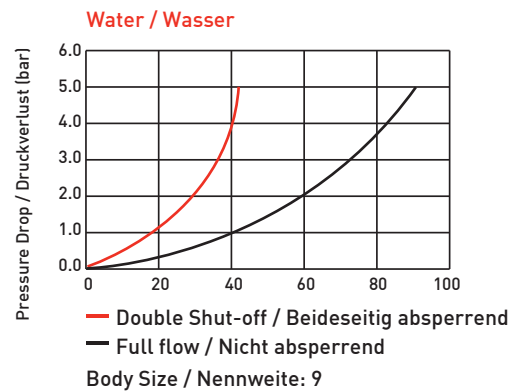
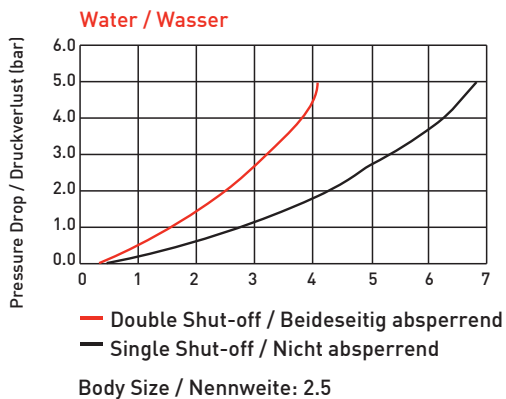
Für diese Option fügen Sie S zur Artikelnummer hinzu. Z.B. CSK 090 **S 13**



E2 Type Safety coupler / SB Sicherheitsverriegelung

Please add the symbol E2 add the symbol of your option end of the order no. For example CSK 090 - 13 - E2

Für diese Option fügen Sie SB zur Artikelnummer hinzu. Z.B. CSK 090 **SB 13**

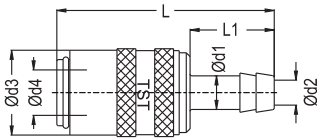




COUPLINGS, MULTICOUPLINGS & MOULD COOLING PRODUCTS

SERIE 059,060,090,190

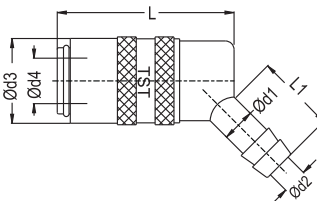
KUPPLUNGEN, MULTIKUPPLUNGEN & KÜHLUNGSELEMENTE FÜR WERKZEUGE



Standard hose tail socket
Kupplung mit gerader Standard - Schlauchtülle



With Valve / Mit Ventil Order No / Bestellnr.	Without Valve / Ohne Ventil Order No / Bestellnr.	Serie	d1	d2	d3	d4	L	LI
CSK 059 - 05	SK 059 - 05	2.7	5 - 3/16"	2.7	10	5	35	13.5
CSK 060 - 06	SK 060 - 06	6	6 - 1/4"	4.5	17	9	46	17
CSK 060 - 08	SK 060 - 08	6	8 - 5/16"	6	17	9	46	17
CSK 060 - 09	SK 060 - 09	6	9 - 5/14"	6	17	9	46	17
CSK 060 - 10	SK 060 - 10	6	10 - 3/8"	6	17	9	46	17
CSK 060 - 13	SK 060 - 13	6	13 - 1/2"	6	17	9	52	23
CSK 090 - 10	SK 090 - 10	9	10 - 3/8"	8	23	13	60	23
CSK 090 - 13	SK 090 - 13	9	13 - 1/2"	10	23	13	60	23
CSK 190 - 19	SK 190 - 19	13	19 - 3/4"	13	31	19	90	32



Standard hose tail socket 45°
Kupplung mit 45°
Standard - Schlauchtülle

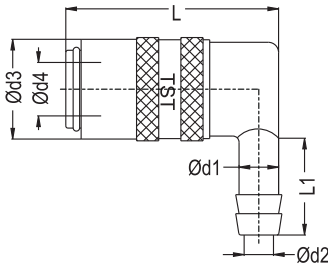


With Valve / Mit Ventil Order No / Bestellnr.	Without Valve / Ohne Ventil Order No / Bestellnr.	Serie	d1	d2	d3	d4	L	LI
CSK 059 - 05 - 45°	SK 059 - 05 - 45°	2.7	5 - 3/16"	2.7	10	5	29.5	13.5
CSK 060 - 06 - 45°	SK 060 - 06 - 45°	6	6 - 1/4"	4.5	17	9	41	17
CSK 060 - 08 - 45°	SK 060 - 08 - 45°	6	8 - 5/16"	6	17	9	41	17
CSK 060 - 09 - 45°	SK 060 - 09 - 45°	6	9 - 5/14"	6	17	9	41	17
CSK 060 - 10 - 45°	SK 060 - 10 - 45°	6	10 - 3/8"	6	17	9	41	17
CSK 090 - 10 - 45°	SK 090 - 10 - 45°	9	10 - 3/8"	8	23	13	51	23
CSK 090 - 13 - 45°	SK 090 - 13 - 45°	9	13 - 1/2"	9	23	13	51	23
CSK 190 - 19 - 45°	SK 190 - 19 - 45°	13	19 - 3/4"	13	31	19	78	32

COUPLINGS, MULTICOUPLINGS & MOULD COOLING PRODUCTS

KUPPLUNGEN, MULTIKUPPLUNGEN & KÜHLUNGSELEMENTE FÜR WERKZEUGE

SERIE 059,060,090,190



Standard hose tail socket 90°
Kupplung mit 90°
Standard - Schlauchtülle

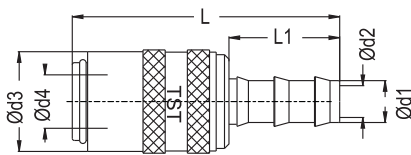


With Valve / Mit Ventil
Order No / Bestellnr.



Without Valve / Ohne Ventil
Order No / Bestellnr.

With Valve / Mit Ventil Order No / Bestellnr.	Without Valve / Ohne Ventil Order No / Bestellnr.	NW	d1	d2	d3	d4	L	LI
CSK 059 - 05 - 90°	SK 059 - 05 - 90°	2.7	5 - 3/16"	2.7	10	5	29.5	13.5
CSK 060 - 06 - 90°	SK 060 - 06 - 90°	6	6 - 1/4"	4.5	17	9	41	17
CSK 060 - 08 - 90°	SK 060 - 08 - 90°	6	8 - 5/16"	6	17	9	41	17
CSK 060 - 09 - 90°	SK 060 - 09 - 90°	6	9 - 5/14"	6	17	9	41	17
CSK 060 - 10 - 90°	SK 060 - 10 - 90°	6	10 - 3/8"	6	17	9	41	17
CSK 090 - 10 - 90°	SK 090 - 10 - 90°	9	10 - 3/8"	8	23	13	51	23
CSK 090 - 13 - 90°	SK 090 - 13 - 90°	9	13 - 1/2"	9	23	13	51	23
CSK 190 - 19 - 90°	SK 190 - 19 - 90°	13	19 - 3/4"	13	31	19	78	32



Push-Lock hose tail socket
Kupplung mit gerader
Schnellsteck - Schlauchtülle

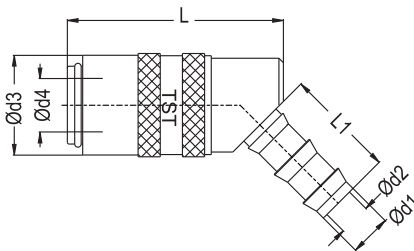


With Valve / Mit Ventil
Order No / Bestellnr.



Without Valve / Ohne Ventil
Order No / Bestellnr.

With Valve / Mit Ventil Order No / Bestellnr.	Without Valve / Ohne Ventil Order No / Bestellnr.	NW	d1	d2	d3	d4	L	LI
CSK 060 - FG 06	SK 060 - FG 06	6	6 - 1/4"	5	17	9	52	24
CSK 060 - FG 10	SK 060 - FG 10	6	10 - 3/8"	7	17	9	52	24
CSK 090 - FG 10	SK 090 - FG 10	9	10 - 3/8"	8	23	13	64	28
CSK 090 - FG 13	SK 090 - FG 13	9	13 - 1/2"	10	23	13	64	28
CSK 190 - FG 19	SK 190 - FG 19	13	19 - 3/4"	13	31	19	96	38



Push-Lock hose tail socket 45°
Kupplung mit 45°
Schnellsteck - Schlauchtülle



With Valve / Mit Ventil
Order No / Bestellnr.



Without Valve / Ohne Ventil
Order No / Bestellnr.

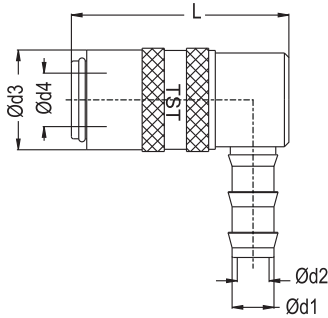
With Valve / Mit Ventil Order No / Bestellnr.	Without Valve / Ohne Ventil Order No / Bestellnr.	NW	d1	d2	d3	d4	L	LI
CSK 060 - FG 06 - 45°	SK 060 - FG 06 - 45°	6	6 - 1/4"	5	17	9	48	24
CSK 060 - FG 10 - 45°	SK 060 - FG 10 - 45°	6	10 - 3/8"	7	17	9	48	24
CSK 090 - FG 10 - 45°	SK 090 - FG 10 - 45°	9	10 - 3/8"	8	23	13	55	28
CSK 090 - FG 13 - 45°	SK 090 - FG 13 - 45°	9	13 - 1/2"	10	23	13	55	28
CSK 190 - FG 19 - 45°	SK 190 - FG 19 - 45°	13	19 - 3/4"	13	31	19	84	38



COUPLINGS, MULTICOUPLINGS & MOULD COOLING PRODUCTS

SERIE 059,060,090,190

KUPPLUNGEN, MULTIKUPPLUNGEN & KÜHLUNGSELEMENTE FÜR WERKZEUGE



Push-Lock hose tail socket 90°
Kupplung mit 90°
Schnellsteck - Schlauchtülle

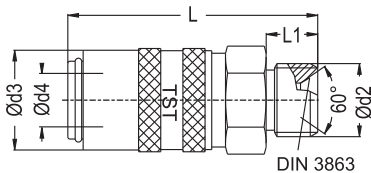


With Valve / Mit Ventil
Order No / Bestellnr.



Without Valve / Ohne Ventil
Order No / Bestellnr.

With Valve / Mit Ventil Order No / Bestellnr.	Without Valve / Ohne Ventil Order No / Bestellnr.	NW	d1	d2	d3	d4	L	LI
CSK 060 - FG 06 - 90°	SK 060 - FG 06 - 90°	6	6 - 1/4"	5	17	9	48	24
CSK 060 - FG 10 - 90°	SK 060 - FG 10 - 90°	6	10 - 3/8"	7	17	9	47	24
CSK 090 - FG 10 - 90°	SK 090 - FG 10 - 90°	9	10 - 3/8"	8	23	13	55	28
CSK 090 - FG 13 - 90°	SK 090 - FG 13 - 90°	9	13 - 1/2"	10	23	13	55	28
CSK 190 - FG 19 - 90°	SK 190 - FG 19 - 90°	13	19 - 3/4"	13	31	19	84	38



Cylindrical Male Thread socket
Kupplung mit Aussengewinde zylindrisch

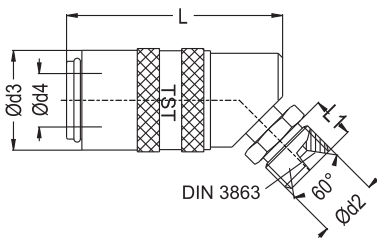


With Valve / Mit Ventil
Order No / Bestellnr.



Without Valve / Ohne Ventil
Order No / Bestellnr.

With Valve / Mit Ventil Order No / Bestellnr.	Without Valve / Ohne Ventil Order No / Bestellnr.	NW	d2	d3	d4	L	LI	SW
CSK 060 - EGM 10	SK 060 - EGM 10	6	M10x1.0	17	9	48	9	17
CSK 060 - EG 13	SK 060 - EG 13	6	BSP 1/4"	17	9	48	9	17
CSK 060 - EGM 14	SK 060 - EGM 14	6	M14x1.5	17	9	48	9	17
CSK 060 - EG 17	SK 060 - EG 17	6	BSP 3/8"	17	9	48	9	17
CSK 090 - EGM 16	SK 090 - EGM 16	9	M16x1.5	23	13	52	9	21
CSK 090 - EG 17	SK 090 - EG 17	9	BSP 3/8"	23	13	52	9	21
CSK 090 - EG 21	SK 090 - EG 21	9	BSP 1/2"	23	13	52	9	21
CSK 190 - EG 21	SK 190 - EG 21	13	BSP 1/2"	31	19	74	12	30
CSK 190 - EGM 24	SK 190 - EGM 24	13	M24x1.5	31	19	78	16	30



Cylindrical Male Thread socket 45°
Kupplung mit 45° Aussengewinde zylindrisch



With Valve / Mit Ventil
Order No / Bestellnr.



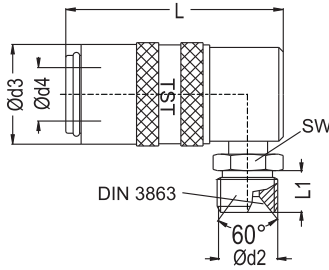
Without Valve / Ohne Ventil
Order No / Bestellnr.

With Valve / Mit Ventil Order No / Bestellnr.	Without Valve / Ohne Ventil Order No / Bestellnr.	NW	d2	d3	d4	L	LI	SW
CSK 060 - EG 13 - 45°	SK 060 - EG 13 - 45°	6	BSP 1/4"	17	9	48	9	17
CSK 060 - EGM 14 - 45°	SK 060 - EGM 14 - 45°	6	M14x1.5	17	9	48	9	17
CSK 060 - EG 17 - 45°	SK 060 - EG 17 - 45°	6	BSP 3/8"	17	9	48	9	17
CSK 090 - EG 17 - 45°	SK 090 - EG 17 - 45°	9	BSP 3/8"	23	13	55	12	21
CSK 090 - EGM 16 - 45°	SK 090 - EGM 16 - 45°	9	M16x1.5	23	13	55	12	21
CSK 090 - EG 21 - 45°	SK 090 - EG 21 - 45°	9	BSP 1/2"	23	13	55	12	21
CSK 190 - EG 21 - 45°	SK 190 - EG 21 - 45°	13	BSP 1/2"	31	19	76	14	30
CSK 190 - EGM 24 - 45°	SK 190 - EGM 24 - 45°	13	M24x1.5	31	19	78	16	30

COUPLINGS, MULTICOUPLINGS & MOULD COOLING PRODUCTS

KUPPLUNGEN, MULTIKUPPLUNGEN & KÜHLUNGSELEMENTE FÜR WERKZEUGE

SERIE 059,060,090,190



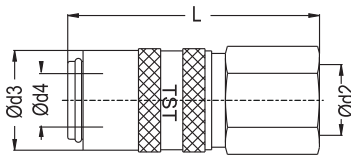
Cylindrical Male Thread socket 90°
Kupplung mit 90° Aussengewinde zylindrisch



With Valve / Mit Ventil Order No / Bestellnr.	Without Valve / Ohne Ventil Order No / Bestellnr.	NW	d2	d3	d4	L	LI	SW
CSK 060 - EG 13 - 90°	SK 060 - EG 13 - 90°	6	BSP 1/4"	17	9	48	11	17
CSK 060 - EGM 14 - 90°	SK 060 - EGM 14 - 90°	6	M14x1.5	17	9	48	11	17
CSK 060 - EG 17 - 90°	SK 060 - EG 17 - 90°	6	BSP 3/8"	17	9	48	11	17
CSK 090 - EG 17 - 90°	SK 090 - EG 17 - 90°	9	BSP 3/8"	23	13	52	11	21
CSK 090 - EGM 16 - 90°	SK 090 - EGM 16 - 90°	9	M16x1.5	23	13	52	11	21
CSK 090 - EG 21 - 90°	SK 090 - EG 21 - 90°	9	BSP 1/2"	23	13	52	11	21
CSK 190 - EG 21 - 90°	SK 190 - EG 21 - 90°	13	BSP 1/2"	31	19	76	14	30
CSK 190 - EGM 24 - 90°	SK 190 - EGM 24 - 90°	13	M24x1.5	31	19	78	16	30



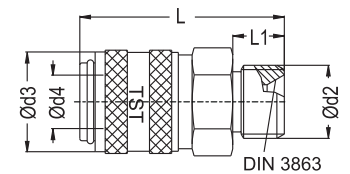
With Valve / Mit Ventil Order No / Bestellnr.	Without Valve / Ohne Ventil Order No / Bestellnr.	NW	d2	d3	d4	L	LI	SW
CSK 060 - DGM 10	SK 060 - DGM 10	6	M10x1.0	17	9	44	9	17
CSK 060 - DG 13	SK 060 - DG 13	6	BSP 1/4"	17	9	44	11	17
CSK 060 - DGM 14	SK 060 - DGM 14	6	M14x1.5	17	9	44	11	17
CSK 060 - DG 17	SK 060 - DG 17	6	BSP 3/8"	17	9	44	11	17
CSK 090 - DGM 16	SK 090 - DGM 16	9	M16x1.5	23	13	48	11	21
CSK 090 - DG 17	SK 090 - DG 17	9	BSP 3/8"	23	13	48	11	21
CSK 090 - DG 21	SK 090 - DG 21	9	BSP 1/2"	23	13	48	11	21
CSK 190 - DG 21	SK 190 - DG 21	13	BSP 1/2"	31	19	70	14	30
CSK 190 - DGM 24	SK 190 - DGM 24	13	M24x1.5	31	19	72	16	30
CSK 190 - DG 26	SK 190 - DG 26	13	BSP 3/4"	31	19	72	16	30



Female Thread socket
Kupplung mit Innengewinde



With Valve / Mit Ventil Order No / Bestellnr.	NW	d2	d3	d4	L	LI	SW
060 - EG 13	6	BSP 1/4"	18	9	38	9	17
090 - EG 17	9	BSP 3/8"	23	13	38	9	21



Cylindrical Male Thread socket (Short type)
Kupplung mit Aussengewinde zylindrisch
(kurze Version)



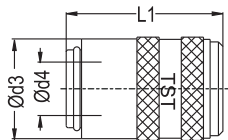
COUPLINGS, MULTICOUPLINGS & MOULD COOLING PRODUCTS

SERIE 059,060,090,190

KUPPLUNGEN, MULTIKUPPLUNGEN & KÜHLUNGSELEMENTE FÜR WERKZEUGE

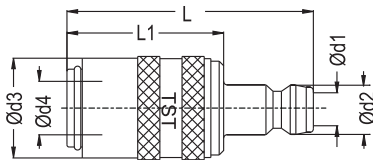


Blind Socket / Blindkupplung



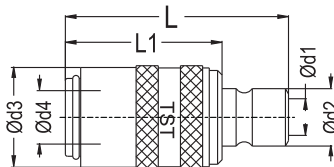
Order No / Bestellnr.	NW	d3	d4	LI
060 KTG 00	6	13	9	31,5
090 KTG 00	9	23	13,6	35,8

Adapting Socket with 060 - 090 Plugs
Adapterkupplung mit Nippel



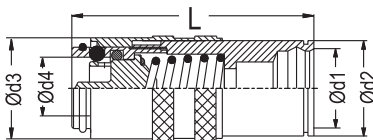
With Valve / Mit Ventil Order No / Bestellnr.	Without Valve / Ohne Ventil Order No / Bestellnr.	NW	d1	d2	d3	d4	L	LI
CSK 060 AU 090	SK 060 AU 090	6	9	13	18	9	58.5	44
CSK 090 AU 060	SK 090 AU 060	9	6	9	23	13	57.5	45

Adapting Socket With 6 - 9 Plugs
Adapterkupplung mit Nippel



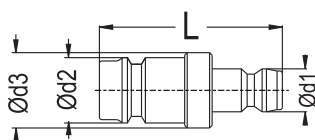
With Valve / Mit Ventil Order No / Bestellnr.	Without Valve / Ohne Ventil Order No / Bestellnr.	NW	d1	d2	d3	d4	L	LI
CSK 060 AU 06	SK 060 AU 06	6	6	9	18	9	56	44
CSK 090 AU 09	SK 090 AU 09	9	9	13	23	13	60	45

Adapting Socket with 100.08 Plug
Adapterkupplung mit Buchse



With Valve / Mit Ventil Order No / Bestellnr.	Without Valve / Ohne Ventil Order No / Bestellnr.	NW	d1	d2	d3	d4	L
CSK 060 AU 100.08	SK 060 AU 100.08	6	17	21	18	9	56
CSK 090 AU 100.08	SK 090 AU 100.08	9	17	21	23	13	60

Adapting Plug 060 - 090
Adaptornippel 060 - 090



Order No / Bestellnr.	NW	d3	d4	LI
060 HEF 090	9	13	14	32
060 HEF 00	9	9	11	34
090 HEF 00	13	13	14	40

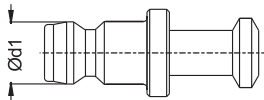
COUPLINGS, MULTICOUPLINGS &
MOULD COOLING PRODUCTS

KUPPLUNGEN, MULTIKUPPLUNGEN &
KÜHLUNGSELEMENTE FÜR WERKZEUGE

SERIE 059,060,090,190



Stop Plug / Blindnippel



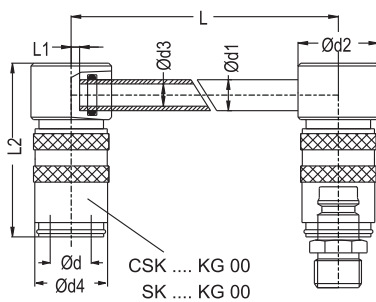
Order No / Bestellnr.

d1

059 KTU 00
060 KTU 00
090 KTU 00
190 KTU 00

5
9
13
19

Diverting Socket / Umlenkkupplungen



With Valve / Mit Ventil
Order No / Bestellnr.

Without Valve / Ohne Ventil
Order No / Bestellnr.

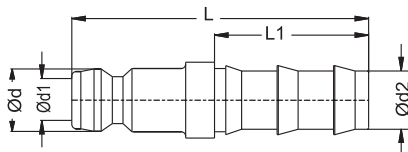
CSK 060 - KG 125
CSK 060 - KG 250
CSK 060 - KG 500
CSK 090 - KG 125
CSK 090 - KG 250
CSK 090 - KG 500
CSK 190 - KG 160
CSK 190 - KG 315
CSK 190 - KG 500

SK 060 - KG 125
SK 060 - KG 250
SK 060 - KG 500
SK 090 - KG 125
SK 090 - KG 250
SK 090 - KG 500
SK 190 - KG 160
SK 190 - KG 315
SK 190 - KG 500

d	d1	d2	d3	d4	t	h	L	LI	L2
9	8	20	6	17	18	29	125	0	44
9	8	20	6	17	18	29	250	0	44
9	8	20	6	17	18	29	500	0	44
13	10	26	8	23	18	39	125	2	53
13	10	26	8	23	18	39	250	2	53
13	10	26	8	23	18	39	500	2	53
19	14	36	12	31	36	54	160	3	80
19	14	36	12	31	36	54	315	3	80
19	14	36	12	31	36	54	500	3	80

"Not released for sale in Germany"
"Verkauf in Deutschland ausgeschlossen"

Push-Lock Hose Plug
Stecknippel mit
Schnellsteck - Schlauchtülle



Order No / Bestellnr.

NW

d2

d4

L

060 FU 10
060 FU 13
090 FU 10
090 FU 13
190 FU 13
190 FU 19

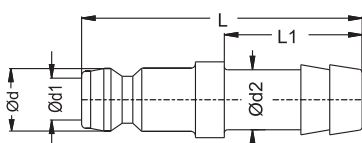
6
6
9
9
13
13

10 - 3/8"
13 - 1/2"
10 - 3/8"
13 - 1/2"
13 - 1/2"
19 - 3/4"

41
45
41
45
60
70

24
24
24
28
28
38

Standard Hose Plug
Standard Schlauchtülle



Order No / Bestellnr.

NW

d2

d4

L

059 HU 05
060 HU 06
060 HU 08
060 HU 09
060 HU 10
060 HU 13
090 HU 10
090 HU 13
190 HU 13
190 HU 19

5
6
6
6
6
6
9
9
13
13

5
6 - 1/4"
8 - 5/16"
9 - 5/14"
10 - 3/8"
13 - 1/2"
10 - 3/8"
13 - 1/2"
13 - 1/2"
19 - 3/4"

25
37
37
37
37
37
39
39
53
62

13.5
17
17
17
17
17
23
23
23
27



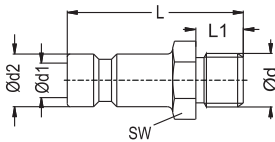
COUPLINGS, MULTICOUPLINGS & MOULD COOLING PRODUCTS

SERIE 059,060,090,190

KUPPLUNGEN, MULTIKUPPLUNGEN & KÜHLUNGSELEMENTE FÜR WERKZEUGE

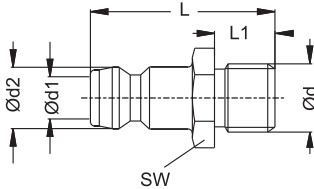


Plug with thread (059 serie)
Nippel mit Gewinde (059 serie)



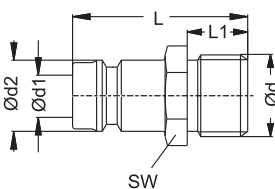
Order No / Bestellnr.	Ød	d1	d2	SW	L	LI
059 EUM 5	M5x0.50	2.7	5	7	18	5
059 EUM 8	M8x0.75	2.7	5	9	20	7

Plug with thread (060 serie)
Nippel mit Gewinde (060 serie)



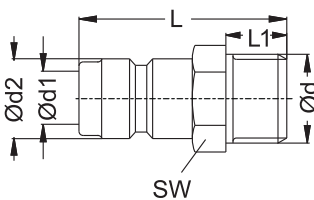
Order No / Bestellnr.	Ød	d1	d2	SW	L	LI
060 EUM 8	M8x0.75	5	9	11	24	7
060 EUM 10	M10x1.0	6	9	11	24	7
060 EUM 10-1.5	M10x1.5	6	9	11	26	9
060 EU 10	BSP 1/8"	6	9	11	24	7
060 EU 13	BSP 1/4"	6	9	14	26	9
060 EUM 14	M14x1.5	6	9	14	26	9
060 EU 17	BSP 3/8"	6	9	17	26	9

Plug with thread (090 serie)
Nippel mit Gewinde (090 serie)



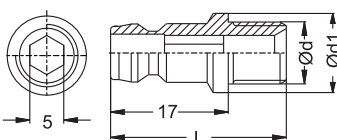
Order No / Bestellnr.	Ød	d1	d2	SW	L	LI
090 EU 10	BSP 1/8"	9	13	14	24	7
090 EUM 10	M10x1.0	9	13	14	26	9
090 EUM 10x1.5	M10x1.5	9	13	14	26	9
090 EUM 12	M12x1.5	9	13	14	26	9
090 EU 13	BSP 1/4"	9	13	14	26	9
090 EUM 14	M14x1.5	9	13	14	26	9
090 EUM 16	M16x1.5	9	13	17	26	9
090 EU 17	BSP 3/8"	9	13	17	26	9
090 EU 21	BSP 1/2"	9	13	21	30	12

Plug with thread
Nippel Aussengewinde



Order No / Bestellnr.	Ød	d1	d2	SW	L	LI
190 EU 21	BSP 1/2"	13	19	22	47	12
190 EUM 24	M24x1.5	13	19	27	51	16
190 EU 26	BSP 3/4"	13	19	27	51	16

Inner hex. Plugs for 060 Serie
Nippel mit Innenschkant

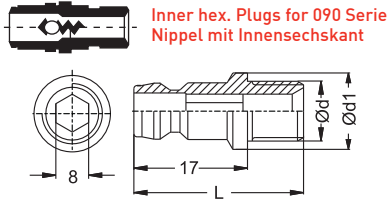


Order No / Bestellnr.	Ød	d1	L
060 AUM 08	M8x0.75	10	24
060 AUM 10	M10x1.0	11	24
060 AUG 10	BSP 1/8"	11	24
060 AUG 13	BSP 1/4"	13.5	27

COUPLINGS, MULTICOUPLINGS & MOULD COOLING PRODUCTS

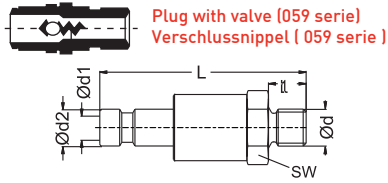
KUPPLUNGEN, MULTIKUPPLUNGEN & KÜHLUNGSELEMENTE FÜR WERKZEUGE

SERIE 059,060,090,190



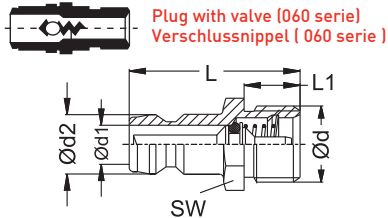
Inner hex. Plugs for 090 Serie
Nippel mit Innensechskant

Order No / Bestellnr.	Ød	dl	L
090 AUM 14	M14x1.5	14.5	26
090 AUG 13	BSP 1/4"	13.5	26
090 AUG 17	BSP 3/8"	17	26



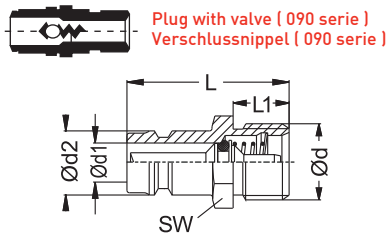
Plug with valve (059 serie)
Verschlussnippel (059 serie)

Order No / Bestellnr.	Ød	dl	d2	L	LI	SW
059 EUBM 5	M5x0.50	2.7	5	28	5	9
059 EUBM 8	M8x0.75	2.7	5	30	7	9



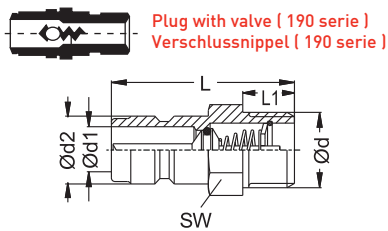
Plug with valve (060 serie)
Verschlussnippel (060 serie)

Order No / Bestellnr.	Ød	dl	d2	L	LI	SW
060 EUB 13	BSP 1/4"	6	9	30	12	14
060 EUBM 14	M14x1.5	6	9	30	12	14
060 EUB 17	BSP 3/8"	6	9	30	12	17



Plug with valve (090 serie)
Verschlussnippel (090 serie)

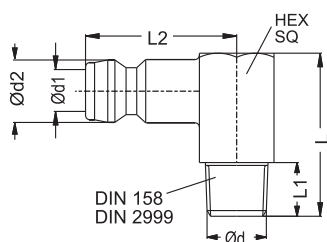
Order No / Bestellnr.	Ød	dl	d2	L	LI	SW
090 EUB 13	BSP 1/4"	9	13	30	12	14
090 EUBM 14	M14x1.5	9	13	30	12	14
090 EUBM 16	M16x1.5	9	13	30	12	17
090 EUB 17	BSP 3/8"	9	13	30	12	17



Plug with valve (190 serie)
Verschlussnippel (190 serie)

Order No / Bestellnr.	Ød	dl	d2	L	LI	SW
190 EUB 21	BSP 1/2"	13	19	51	16	22
190 EUBM 24	M24x1.5	13	19	51	16	27
190 EUB 26	BSP 3/4"	13	19	51	16	27

Angle Plug with 90°
Winkel-nippel mit 90°



Order No / Bestellnr.	Ød	dl	d2	SW (SQ)	L	LI	L2
059 EUM 5 - 90°	M5x0.50	6	5	10	15.5	5	14.5
059 EUM 8 - 90°	M8x0.75	6	5	10	17.5	7	14.5
060 EUM 8 - 90°	M8x0.75	6	9	11	27	9	23
060 EUM 10 - 90°	M10x1.0	6	9	11	27	9	23
060 RU 10 - 90°	BSPT 1/8"	6	9	11	27	9	23
060 RU 13 - 90°	BSPT 1/4"	6	9	15	34	12	23
060 EUM 14 - 90°	M14x1.5	6	9	15	34	12	23
060 RU 17 - 90°	BSPT 3/8"	6	9	17	34	12	23
090 RU 13 - 90°	BSPT 1/4"	9	13	15	34	12	25
090 EUM 14 - 90°	M14x1.5	9	13	15	34	12	25
090 RU 17 - 90°	BSPT 3/8"	9	13	17	34	12	25
190 RU 21 - 90°	BSPT 1/2"	13	19	24	47	16	35
190 EUM 24 - 90°	M24x1.5	13	19	24	47	16	35



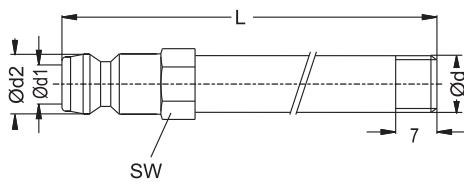
COUPLINGS, MULTICOUPLINGS & MOULD COOLING PRODUCTS

SERIE 059,060,090,190

KUPPLUNGEN, MULTIKUPPLUNGEN & KÜHLUNGSELEMENTE FÜR WERKZEUGE

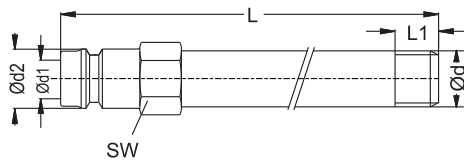


Extension plug with thread (060 serie)
Verlängerungsnippel mit Gewinde (060 serie)



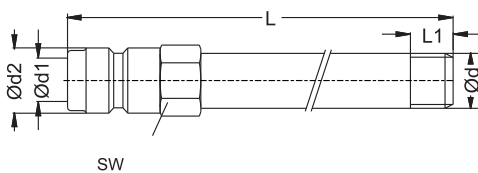
Order No / Bestellnr.	Ød	d1	d2	SW	LI	Extension tube / Verlängerung		
						L60	L100	L150
060 EUM 8 x L	M8x0.75	5	9	11	7	60	100	150
060 EUM 10 x L	M10x1.0	6	9	11	7	60	100	150
060 EUM 10x1.5 x L	M10x1.5	6	9	11	9	60	100	150
060 EU 10 x L	BSP 1/8"	6	9	11	7	60	100	150
060 EU 13 x L	BSP 1/4"	6	9	14	9	60	100	150
060 EUM 14 x L	M14x1.5	6	9	14	9	60	100	150
060 EU 17 x L	BSP 3/8"	6	9	17	9	60	100	150

Extension plug with thread (090 serie)
Verlängerungsnippel mit Gewinde (090 serie)



Order No / Bestellnr.	Ød	d1	d2	SW	LI	Extension tube / Verlängerung		
						L60	L100	L150
090 EU 10 x L	BSP 1/8"	9	13	14	7	60	100	150
090 EUM 10 x L	M10x1.0	9	13	14	9	60	100	150
090 EUM 10x1.5 x L	M10x1.5	9	13	14	9	60	100	150
090 EUM 12 x L	M12x1.5	9	13	14	9	60	100	150
090 EU 13 x L	BSP 1/4"	9	13	14	9	60	100	150
090 EUM 14 x L	M14x1.5	9	13	14	9	60	100	150
090 EUM 16 x L	M16x1.5	9	13	17	9	60	100	150
090 EU 17 x L	BSP 3/8"	9	13	17	9	60	100	150
090 EU 21 x L	BSP 1/2"	9	13	21	1	60	100	150

Extension plug with thread (190 serie)
Verlängerungsnippel mit Gewinde (190 serie)



Order No / Bestellnr.	Ød	d1	d2	SW	LI	Extension tube / Verlängerung		
						L60	L100	L150
190 EU 21 x L	BSP 1/2"	13	19	22	12	250	500	800
190 EUM 24 x L	M24x1.5	13	19	27	16	250	500	800
190 EU 26 x L	BSP 3/4"	13	19	27	16	250	500	800

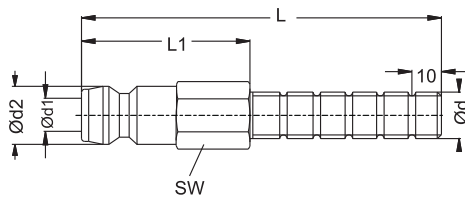
COUPLINGS, MULTICOUPLINGS & MOULD COOLING PRODUCTS

KUPPLUNGEN, MULTIKUPPLUNGEN & KÜHLUNGSELEMENTE FÜR WERKZEUGE

SERIE 059,060,090,190

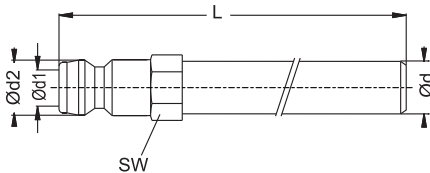


Long threaded plugs (060 - 090 serie)
Gewindestecker (060 - 090 serie)



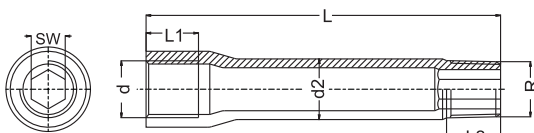
Order No / Bestellnr.	Type	Ød	d1	d2	SW	LI	L2
060 BLM 10x100	060	M10x1.0	6	9	11	40	100
060 BL 10x100	060	BSP 1/8"	6	9	11	40	100
060 BL 13x100	060	BSP 1/4"	6	9	14	40	100
060 BLM 14x100	060	M14x1.5	6	9	14	40	100
060 BL 17x100	060	BSP 3/8"	6	9	17	40	100
090 BLM 10x100	090	M10x1.0	9	13	14	40	100
090 BL 10x100	090	BSP 1/8"	9	13	14	40	100
090 BL 13x100	090	BSP 1/4"	9	13	14	40	100
090 BLM 14x100	090	M14x1.5	9	13	14	40	100
090 BLM 16x100	090	M16x1.5	9	13	17	40	100
090 BL 17x100	090	BSP 3/8"	9	13	17	40	100

Extension Plug without thread
Verlängerungsnippel ohne Gewinde



Order No / Bestellnr.	Type	Ød	d1	d2	SW	LI	L2
060 BU 63	060	8	6	9	9	21	63
060 BU 100	060	10	6	9	11	21	100
060 BU 120	060	10	6	9	11	21	120
060 BU 240	060	10	6	9	11	21	240
060 BU 360	060	10	6	9	11	21	360
090 BU 150	090	14	9	13	15	22	150
090 BU 300	090	14	9	13	15	22	300
090 BU 450	090	14	9	13	15	22	450
190 BU 500	190	21	13	19	22	33	500
190 BU 800	190	21	13	19	22	33	800

Steel Extension Tube
Verlängerungsnippel aus Stahl



Order No / Bestellnr.		d	R	d2	L	LI	L2	SW
BSP / BSPT	NPT / NPT							
R 10 BU 50	N 10 BU 50	1/8"	1/8"	10	50	12	10	5
R 10 BU 75	N 10 BU 75	1/8"	1/8"	10	75	12	10	5
R 10 BU 100	N 10 BU 100	1/8"	1/8"	10	100	12	10	5
R 10 BU 125	N 10 BU 125	1/8"	1/8"	10	125	12	10	5
R 13 BU 50	N 13 BU 50	1/4"	1/4"	14	50	12	10	8
R 13 BU 75	N 13 BU 75	1/4"	1/4"	14	75	12	10	8
R 13 BU 100	N 13 BU 100	1/4"	1/4"	14	100	12	10	8
R 13 BU 125	N 13 BU 125	1/4"	1/4"	14	125	12	10	8
R 13 BU 150	N 13 BU 150	1/4"	1/4"	14	150	12	10	8

Spare O-Rings / Ersatz O-Ring (NBR)



Order No / Bestellnr.	Serie	Temperature
CG 060 N	TST 060	
CG 090 N	TST 090	-20° / 100° C
CG 190 N	TST 190	-4° F / +212° F

Spare O-Rings / Ersatz O-Ring (V)



Order No / Bestellnr.	Serie	Temperature
CG 060 V	TST 060	
CG 090 V	TST 090	-20° / 200° C
CG 190 V	TST 190	-14° F / +392° F



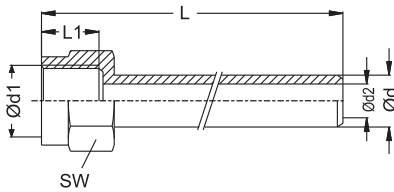
COUPLINGS, MULTICOUPLINGS & MOULD COOLING PRODUCTS

SERIE 059,060,090,190

KUPPLUNGEN, MULTIKUPPLUNGEN & KÜHLUNGSELEMENTE FÜR WERKZEUGE

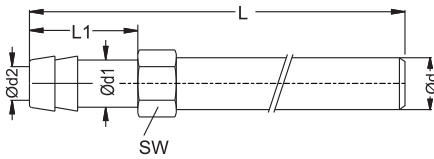


Sealing plug extension / Dichtungsnippel mit Verlängerung



Order No / Bestellnr.	Ød	d1	d2	t	LI	SW	L
UN 14 - 120	M14x1.5	10	6	12	15.5	17	120
UN 14 - 240	M14x1.5	10	6	12	15.5	17	240
UN 16 - 150	M16x1.5	14	9	12	15.5	22	150
UN 16 - 300	M16x1.5	14	9	12	15.5	22	300
UN 24 - 500	M24x1.5	21	13	16	21	30	500
UN 24 - 800	M24x1.5	21	13	16	21	30	800

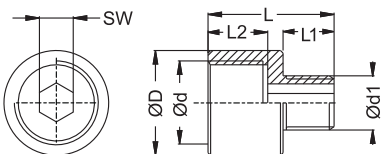
Hose tail extension Schlauchtülle Verlängerung



Material : Brass - Laiton

Order No / Bestellnr.	Ød	d2	d1	LI	SW	L
BHE 120	10	6	9	25	11	120
BHE 240	10	6	9	25	11	240
BHE 360	10	6	9	25	11	360
BHE 150	14	9	13	33	15	150
BHE 300	14	9	13	33	15	300
BHE 450	14	9	13	33	15	450
BHE 500	21	13	19	38	22	500

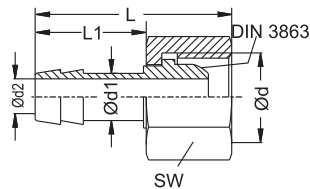
Cylindrical reduction Reduziernippel



Material : Brass - Laiton

Order No / Bestellnr.	Ød	Ød1	ØD	L	LI	L2	SW
BDM 14/10	M14x1.5	M10x1	17	22	7	12	6
BDM 13/10	BSP 1/4"	BSP 1/8"	17	22	7	12	6
BDM 16/14	M16x1.5	M14x1.5	20	24	9	12	8
BDM 17/13	BSP 3/8"	BSP 1/4"	20	24	9	12	8

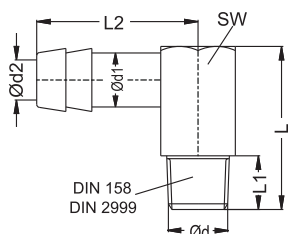
Hose tail + Nut Schlauchtüllen + Überwurfmutter



Material : Brass - Laiton

Order No / Bestellnr.	Ød	d1	d2	LI	L	SW
SN 14	M14x1.5	9	6	15.5	34.5	17
SN 13	BSP 1/4"	9	6	15.5	34.5	17
SN 16	M16x1.5	13	9	14	41	22
SN 17	BSP 3/8"	13	9	14	41	22
SN 24	M24x1.5	19	13	20	52	30
SN 26	BSP 3/4"	19	13	20	52	32

Angle Nippel [90°] Winkelnippel [90°]



Material : Brass - Laiton

Order No / Bestellnr.	Ød	d1	d2	L	LI	L2	SW
AHE M8	M8x0.75	9	4.5	27	9	23	11
AHE M10	M10x1	9	6	27	9	23	11
AHE 10	BSPT 1/8"	9	6	27	9	23	11
AHE M14	M14x1.5	13	9	34	12	32.5	15
AHE 13	BSPT 1/4"	13	9	34	12	32.5	15
AHE M24	M24x1.4	19	13	47	16	44	24
AHE 21	BSPT 1/2"	19	13	47	16	44	22

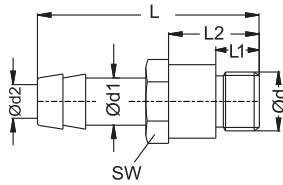
COUPLINGS, MULTICOUPLINGS & MOULD COOLING PRODUCTS

KUPPLUNGEN, MULTIKUPPLUNGEN & KÜHLUNGSELEMENTE FÜR WERKZEUGE

SERIE 059,060,090,190



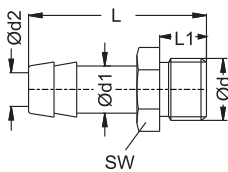
Hose nipple / Nippel mit Schlauchtülle



Material : MS 58 (Brass - Messing)

Order No / Bestellnr.	d	d1	d2	L	L1	L2	SW
UHE M10	M10x1.0	9	6	35	7	14	11
UHE 10	BSP 1/8"	9	6	35	7	14	11
UHE M12	M12x1.5	9	8	37	10	18	14
UHE M14	M14x1.5	13	9	47	9	16	15
UHE 13	BSP 1/4"	13	9	47	9	16	15
UHE M24	M24x1.5	13	13	62	12	22	27
UHE 21	BSP 1/2"	19	13	62	12	22	22

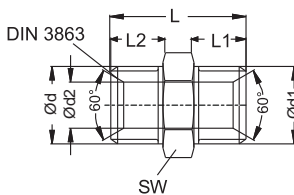
SHE nippel / SHE Nippel



Material : MS 58 (Brass - Messing)

Order No / Bestellnr.	d	d1	d2	L	L1	SW
SHE M8	M8x0,75	9	4.5	27	6	11
SHE M10	M10x1.0	9	6	28	7	11
SHE 10	BSP 1/8"	9	6	28	7	11
SHE M12	M12x1.5	13	9	38	9	15
SHE 13	BSP 1/4"	13	9	38	10	15
SHE M14	M14x1.5	13	9	38	10	15
SHE M16	M16x1.5	13	9	38	10	17
SHE 17	BSP 3/8"	13	9	38	10	17
SHE M24	M24x1.5	19	13	49	16	27
SHE 21	BSP 1/2"	19	13	46	12	22
SHE 26	BSP 3/4"	19	13	49	16	27

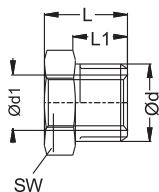
Double nipples / Doppelnippel



Material : MS 58 (Brass - Messing)

Order No / Bestellnr.d	d	d1	d2	L	L1	L2	SW
DP 14/14	M14x1,5	M14x1,5	6	24	9	9	17
DP 14/13	M14x1.5	BSP 1/4"	6	24	9	9	15
DP 13/13	BSP 1/4"	BSP 1/4"	6	23	9	9	17
DP 16/16	M16x1.5	M16x1.5	9	24	9	9	17
DP 16/17	M16x1.5	BSP 3/8"	9	24	9	9	19
DP 17/17	BSP 3/8"	BSP 3/8"	9	24	9	9	19
DP 24/24	M24x1.5	M24x1.5	13	40	16	16	27
DP 24/21	M24x1.5	BSP 1/2"	13	36	16	12	25
DP 21/21	BSP 1/2"	BSP 1/2"	13	30	12	12	22
DP 26/26	BSP 3/4"	BSP 3/4"	13	40	16	16	27

Reduction / Reduzierung



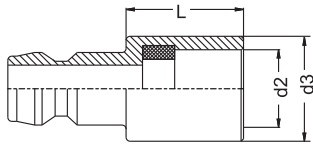
Material : MS 58 (Brass - Messing)

Order No / Bestellnr.	d	d1	L	L1	SW
RD 14/10	M14x1,5	M10x1.0	14	9	15
RD 18/14	M18x1.5	M14x1.5	14	9	19
RD 13/10	BSP 1/4"	BSP 1/8"	11	8	15
RD 17/13	BSP 3/8"	BSP 1/4"	13	9	19
RD 21/17	BSP 1/2"	BSP 3/8"	18	12	22
RD 24/16	M24x1.5	M16x1.5	24	16	25
RD 26/21	BSP 3/4"	BSP 1/2"	24	16	27

COUPLINGS, MULTICOUPLINGS & MOULD COOLING PRODUCTS

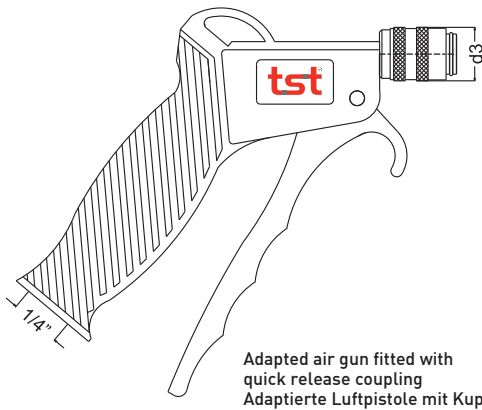
KUPPLUNGEN, MULTIKUPPLUNGEN & KÜHLUNGSELEMENTE FÜR WERKZEUGE

Adapted Plug / Adaptierter Nippel



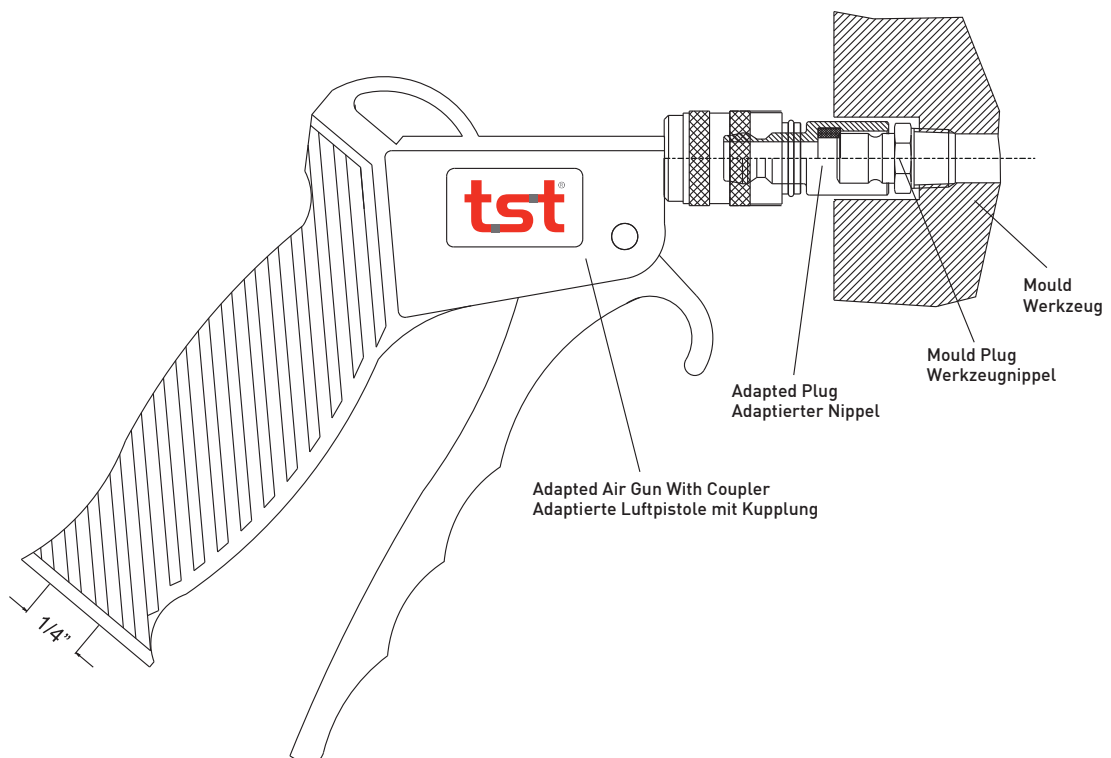
Interchangeable adaptor to suit mould plug
Kompatible Adapter für Werkzeugnippel

Order No / Bestellnr.	d2	d3	L
060 HTU 00	9	14	14.5
090 HTU 00	13	18	20.5



Adapted air gun fitted with quick release coupling
Adaptierte Luftpistole mit Kupplung

Order No / Bestellnr.	d3
TSW00	18



Adapted Air Gun With Coupler
Adaptierte Luftpistole mit Kupplung